

Scratch Operating Software

Version	Date	Author	Note
3.0.0	2017-12-11	Noah Smith	First revision with images and instructions for G5 machine and SOS 2.X-series operating software.
3.1.0	2019-01-01	Noah Smith	
3.2.0	2020-05-08	William Love	Revise calibration instructions for 5.5 Head
3.3.0	2021-01-20	Noah Smith	Remove depth calibration, add images for normal and tangential calibration
3.4.0	2022-04-02	Noah Smith	Add details regarding alternate test modes.

Table of Contents

Scratch Operating Software	1
1. About This Document	4
1.1. Safety	4
1.2. Conventions	4
2. Introduction	6
2.1. Software Features	6
2.2. Scratch 5 Machine Overview	7
2.2.1. Specifications	8
2.2.2. Comments on Specifications	9
Scratch Velocity	9
Normal Load	9
Scratch Length	9
2.2.3. Sample Thickness	10
2.3. Location	10
2.4. Basic Assembly	11
3. Parts Description	12
3.1. The Scratch 5 Machine	12
3.2. The Testing Apparatus	12
3.2.1. The Scratch Head Assembly	13
Lower Part	14
Upper Part	14
3.2.2. The Work Surface	15
3.3. The Windows PC	15
4. Operating the Scratch Machine	16
4.1. Startup	16
4.1.1. Visual Inspection of the Machine	16
4.1.2. Test Apparatus Power	16
Turning On	16
Turning Off	17
Emergency Stop	17
Recovering From an Emergency Stop	17
5. A Basic Scratch Test	18
5.1. Scratching Process	18
5.2. Data Collected	18
5.3. Further Analysis	18
6. Installing the Scratch Operating Software	19
6.1. Installation Requirements	19
6.1.1. Verifying Driver Version	19
6.2. Installation Directions	21
7. Using the Scratch Operator Software	27
7.1. Starting the Software	27
7.2. The Main Interface	27
7.2.1. Primary Features	30

	Test Parameters	30
	Operations	30
7.3.	Scratch Machine Initialization	31
7.4.	Calibration	31
7.4.1.	Saving Calibration Scales	31
7.4.2.	Creating New Calibration Scales	32
	Calibrating the Normal Load Sensor	33
	Calibrating the Tangential Load Sensor	42
	Creating an X Position Calibration Scale	50
7.4.3.	Resetting a Calibration Scale	55
7.4.4.	Clearing a Calibration Scale	55
7.5.	Jogging the Scratch Head	55
7.6.	Clearing a Halt Operations	56
7.7.	Running a Scratch Test	57
7.8.	Saving a Copy of the Scratch Test Data	61
7.9.	Viewing Scratch Data	62
7.10.	Determining MHC	62
7.11.	Saving and Loading Scratch Test Parameters	62
7.12.	Accessing Diagnostics	63
7.12.1.	Components	68
	Digital	68
	Analog	69
	System Information	69
	Operations	69
	Chart Data	70
8.	Troubleshooting	71
8.1.	Operating Software Freezes After Jogging	71
8.2.	Scratch Machine Not Found at Startup	71

1. About This Document

This document covers the operation and use of the SMS Scratch 5 Machine and the Scratch Operating Software. This document does not cover analytical techniques or basic scratch or tribology science. For other documentation on these or related subjects, see our website at:

<https://www.surfacemachines.com>

For additional information, or the latest software and manuals for your Scratch 5 Machine, you may contact Surface Machine Systems at:

<https://www.surfacemachines.com>

This website will have our latest software, manuals, and contact information for support.

1.1. Safety

As with all lab equipment, safety should be the foremost concern of anyone using heavy or powerful equipment. Along with all other safety procedures that should be taken in a lab setting, please remember:

- ▶ Wear eye protection at all times.
- ▶ Secure long hair or loose clothing so that it does not become entangled in the equipment.
- ▶ Do not place your hand or any other object in the open “slot” on the Scratch 5 Machine.
- ▶ If there are any issues with the software or mechanical systems, immediately shut the Scratch 5 Machine down by hitting the Big Red Button. If there is an issue, contact Surface Machine Systems before starting the machine or running any more tests.
- ▶ Do not leave loose objects on the machine.

1.2. Conventions

When referring to interface elements of the software, we try to include images of the software interface as it would appear. The elements you will be interacting with at any time will be marked with a red box.



Critical notes will appear in Red Boxes.

Notational items or warnings will appear in Yellow Boxes.

2. Introduction

The Scratch 5 Operating Software 2.1.0 is the newest implementation of the operating software for your Scratch 5 Machine. This version is a ground-up rewrite, designed to address the major outstanding issues of the 1.x series Scratch Operating Software, as well as to reduce the complexity of using and maintaining the Scratch 5 Machine.

2.1. Software Features

Rising Load and Constant Load Tests – you can still perform rising, falling, and constant load tests.

Jogging and Positioning – the software allows you to jog or position the head above your samples. Jogging is used to perform setup prior to conducting a test. Jogging the head should never be used to perform a scratch test.

Projects – the concept of a Project has been introduced, which allows you to save your Scratch settings for use and re-use at a later date.

Automatic Save File Increments – you can specify a directory and a sample name, and the software will automatically save scratch data using your sample name in consecutively-numbered files.

Integrated Scratch Data Viewer – the operating software now includes an integrated Scratch Data Viewer, which allows you to view your data without resorting to third party tools. Additionally, the Scratch Data Viewer can automatically find the onset of Scratch, and display only the Scratch region of the Scratch Data. The Scratch Data Viewer can also be used to load old Scratch Data files.

Integrated Diagnostics – the software now includes real-time diagnostic information for use by SMS support staff.

NOTE: the options on this screen can be potentially hazardous to your Scratch Machine. Do not use the options unless directed to do so by a qualified technician.

Integrated Calibration – calibration has never been simpler or more powerful! The new calibration system allows for full-range table-based interpolation over the sensor range. Calibration has become much easier with



the new Calibrator screen. You can now take readings directly within the operating software, and these readings are translated into calibration profiles automatically. A special screen is available for Depth calibration.

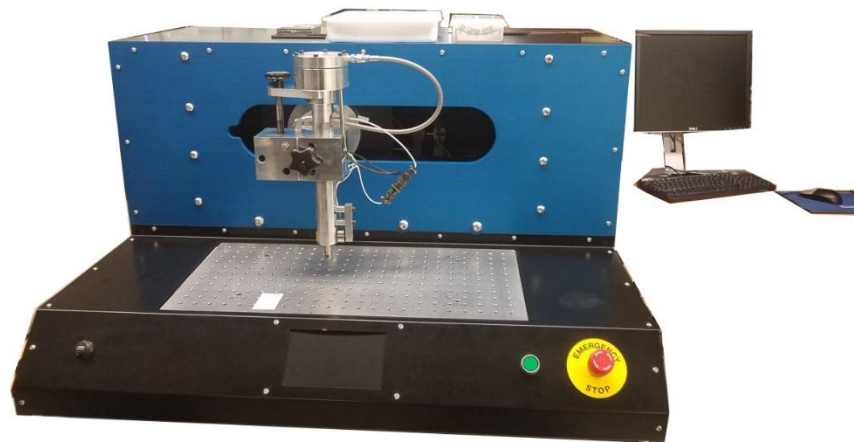
Scratch Machine Finder – now, when the machine is power cycled, you do not have to restart the Operating Software. New operating logic allows the Operating Software to recover when the machine is halted, and to discover the machine when attached. Additionally, the software includes options to clear emergency halts, and to perform first-boot operations to reset the Scratch 5 Machine without restarting the Scratch Operating Software.

Smaller, Easier Installation – the new Scratch 5 Operating Software is less than 1 MB in size, and includes a basic Windows Installer. This compares to the previous installations which were greater than 1 GB in size each (almost 2000 times as big!)

Extra Tools – the Scratch 5 Operating Software includes two new tools with the installation: a stand-alone Scratch Data Viewer, and a stand-alone Machine Discovery Tool. The first tool can be used to inspect and graph Scratch Data without resorting to third-party tools or having to keep the Scratch Operating Software running. The second tool allows you to determine if your Scratch Machine is appropriately connected and powered on without having to start the Scratch Operating Software.

2.2. Scratch 5 Machine Overview

The Scratch 5 Machine is an efficient, easy-to-use, device that generates controlled scratches and marks on a variety of surfaces including polymers, metals, wood, glass, and ceramics. The Scratch 5 Machine applies controlled constant or rising loads to the scratch tip, while translating the scratch tip across the surface of a sample for a specified length at a desired velocity. The Scratch 5 Machine is capable of performing ASTM D7027-05 and ISO 19252 scratch standard tests as well as replicating other popular tests. This manual will help you set up, operate, and maintain your Scratch 5 Machine.



Using the machine and processing test data are simple. Real-time information from each test, such as horizontal displacement, vertical displacement, normal load and tangential load as a function of time, are recorded and written to a plain text file for processing. The execution of tests, data capture, and storage are controlled by a software interface provided on the Windows PC.

A single person can operate the Scratch 5 Machine with ease. Test time is about two to three minutes for each sample. No specific additional components are required for basic scratch operations, although other attachments may be useful for non-standard scratch tests and mar tests. The machine is equipped with an emergency stop switch for operator safety.

Below is a table of the basic operating requirements and testing modes for the scratch machine.

Parameter	Specification
Space Requirement	43" wide, 29" deep, 20" tall
Test Modes	Constant Velocity Constant Normal Load

2.2.1. Specifications

The Scratch 5 Machine is capable of performing scratch tests in four different modes. For the various testing modes, the machine is equipped with operating and data sensing capabilities to address different experimental needs.

Parameter	Range
Sample Thickness	0 – 12.5 mm
Z-Load Cell (Normal)	0.05 – 200 N
X-Load Cell (Tangential)	± 200 N
Z-Displacement Sensor (Depth)	0 - 5 mm
X-Displacement Sensor (Position)	Full scale
Scratch Velocity	0 – 400 mm/s

2.2.2. Comments on Specifications

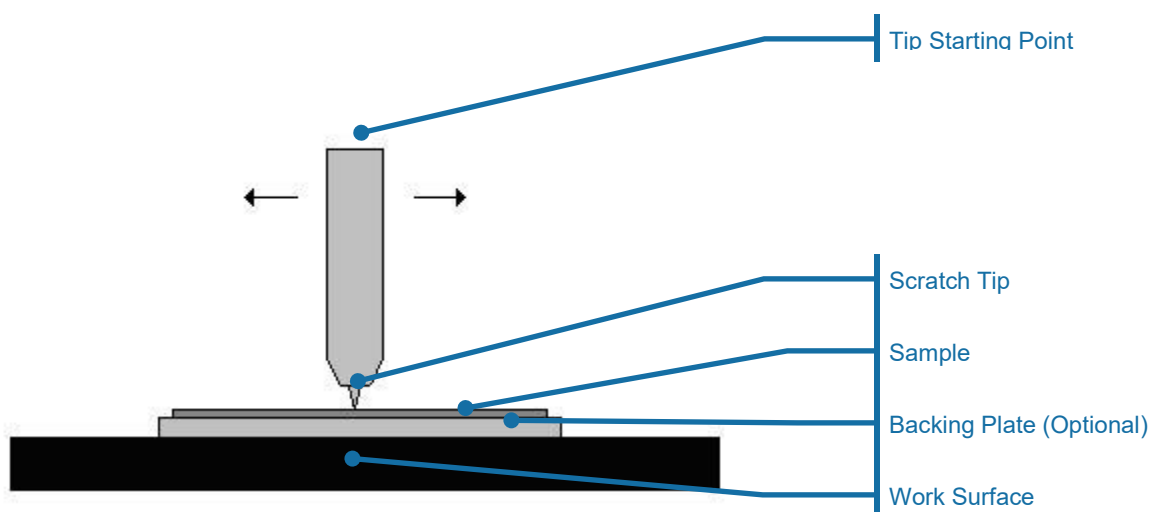
Scratch Velocity

Impulsive Effect - Due to the abrupt change of movement of the Scratch Head Assembly at the beginning and end of tests, there will be a record of sudden increase in the tangential force. This tangential force is called the impulsive effect. Such an impulsive effect will become more apparent with higher scratch velocities. When selecting a scratch velocity and interpreting data, users are to take note of such an effect.

Normal Load

Initial Load Constraints - The minimum load is 0.5 N.

Scratch Length



2.2.3. Sample Thickness

The maximum allowable distance between the mounting surface and the scratch tip is 40 mm (25 mm for older machines). Therefore maximum thickness of a sample must be no more 40 mm measured from the sample's bottom surface to the highest point on the sample's top surface. Users should also take note of any existing curvature when determining the sample's maximum thickness.

The minimum sample thickness is to be determined by the user, taking into account the relative hardness of the sample and the load of the scratch. If the sample is very thin and soft relative to the normal load, there may be a possibility that the tip will plough through the sample and damage the machine's work surface. As a result, the scratch tip, work surface, and other components of the machine may be damaged. It is very important that the work surface remains undamaged in order to execute scratch tests correctly.

When conducting tests on very thin or very soft specimens, it is recommended to use a backing plate from a hard, smooth, material such as polycarbonate or aluminum. Backing plates can also be acquired from Surface Machine Systems. The backing plate should be thick enough to prevent gouging and should be clamped between the specimen and the work surface.

Finding a solid, secure, vibration-free location for the Scratch 5 Machine is critical for acquiring the best scratch test results.

2.3. Location

The machine should be placed on a sturdy workbench or laboratory table. The workspace should be clean, dry and free from anything that could potentially damage the machine or its components (volatile chemicals, bottles that could fall over, high pressure devices, loose paper, etc.). Ample space should be allowed for the operator to access the Testing Apparatus and User Interface System conveniently.

The user should avoid locating the unit next to large machinery which may generate interference or mechanical vibration. This includes equipment such as power generators, air conditioning units, hydraulic pumps, air compressors, induction furnaces, etc. The electric fields, magnetic fields, and mechanical vibration produced by such equipment can cause interference in the sensors, which will compromise the experimental data.

If the machine must be moved on a regular basis, it is recommended that a sturdy cart for this purpose be acquired before the machine is installed. The machine is very heavy and cumbersome, and not easy to relocate once it is installed. Surface Machine Systems has carts specifically designed for use with your Scratch 5 Machine.

The machine should be leveled once it is positioned for use. This is done by placing a spirit level on the work surface and then adjusting the feet on the machine until the spirit level reads level. Either a “bulls-eye” or cylinder-type level may be used. If a standard level is used then check both the X and Y directions (width and depth).

2.4. Basic Assembly

For the assembly of the machine, the basic tasks are as follows.

1. Unpack the various components of the machine.
2. Place each component in its desired location.
3. Connect all cables to the required ports. Each cable is explicitly labeled to avoid confusion.

The scratch head assembly of the Scratch 5 Machine is fabricated to high precision. Extreme care must be exercised when handling the machine. Never use the scratch head as a handle.

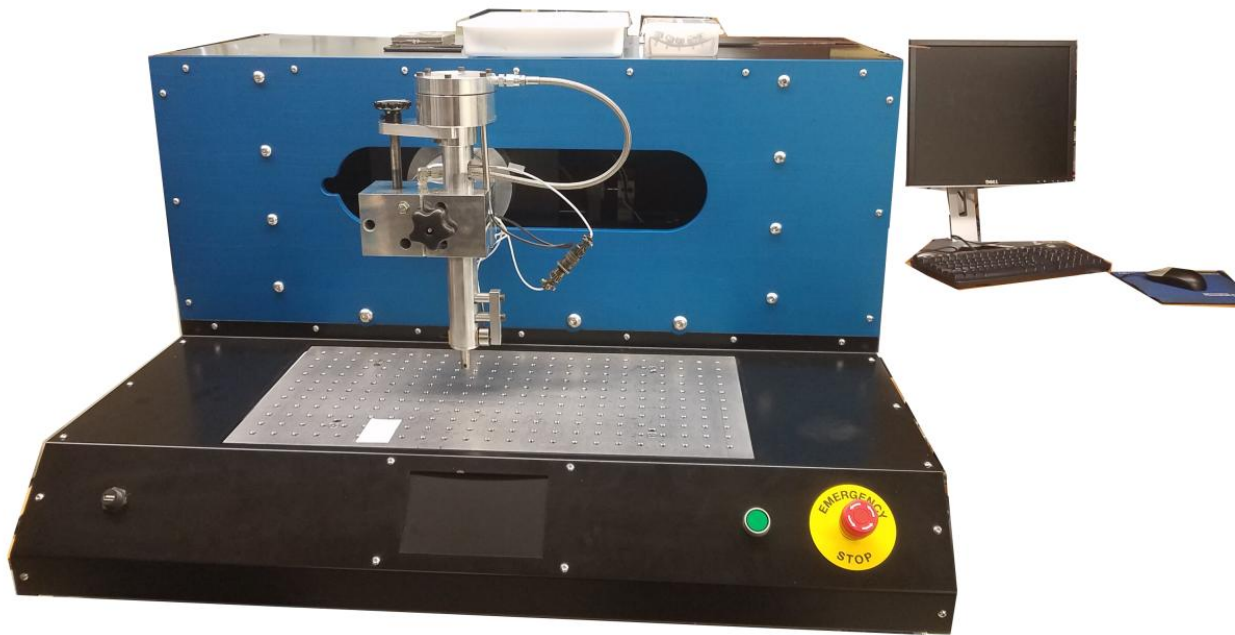
4. Remove all zip ties or other restraining devices on the Scratch 5 Machine.
5. Install the scratch software:
 - a. If your Windows PC does not have NI-DAQmx software installed, perform a default installation of this software. If your Scratch 5 Machine shipped with a Windows PC, SMS has already performed this installation for you.
 - b. Download or copy the Scratch 5 software installer to the Windows PC.
 - c. If the software is compressed (it will show with a Zip icon, or have the .zip extension), decompress the software. Make note of where the software is decompressed to.
 - d. In the software distribution folder, double-click the Setup icon, and perform a default installation of the Scratch 5 software.
6. Install a scratch tip.
7. Plug the main power cable into a wall outlet.

3. Parts Description

The Scratch 5 Machine has two major components. Labeled pictures are provided accordingly to supplement the text description of the different components of the machine.

3.1. The Scratch 5 Machine

The Scratch 5 Machine consists of two major components, the Testing Apparatus and the User Interface System. The User Interface System is a standard Windows PC with a specialized Data Capture Card (not pictured below).



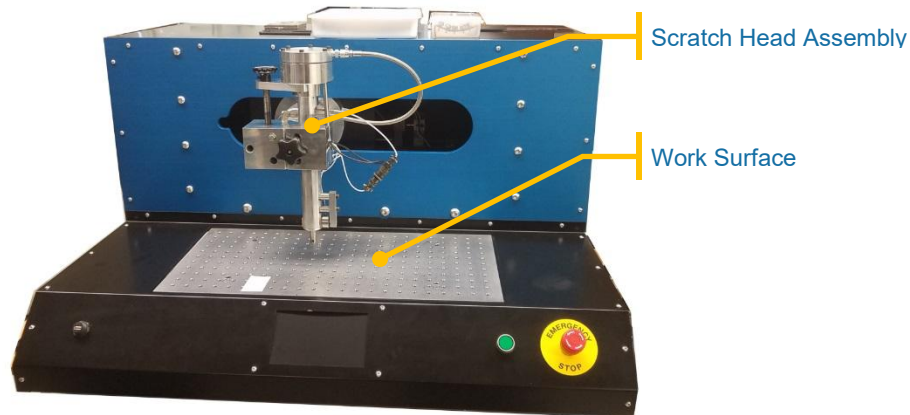
The functions of these major components are:

- ▶ **Testing Apparatus** – Houses all necessary mechanical parts for testing.
- ▶ **User Interface System** – Allows users to input testing parameters and execute scratch tests as well as view and process test data.

3.2. The Testing Apparatus

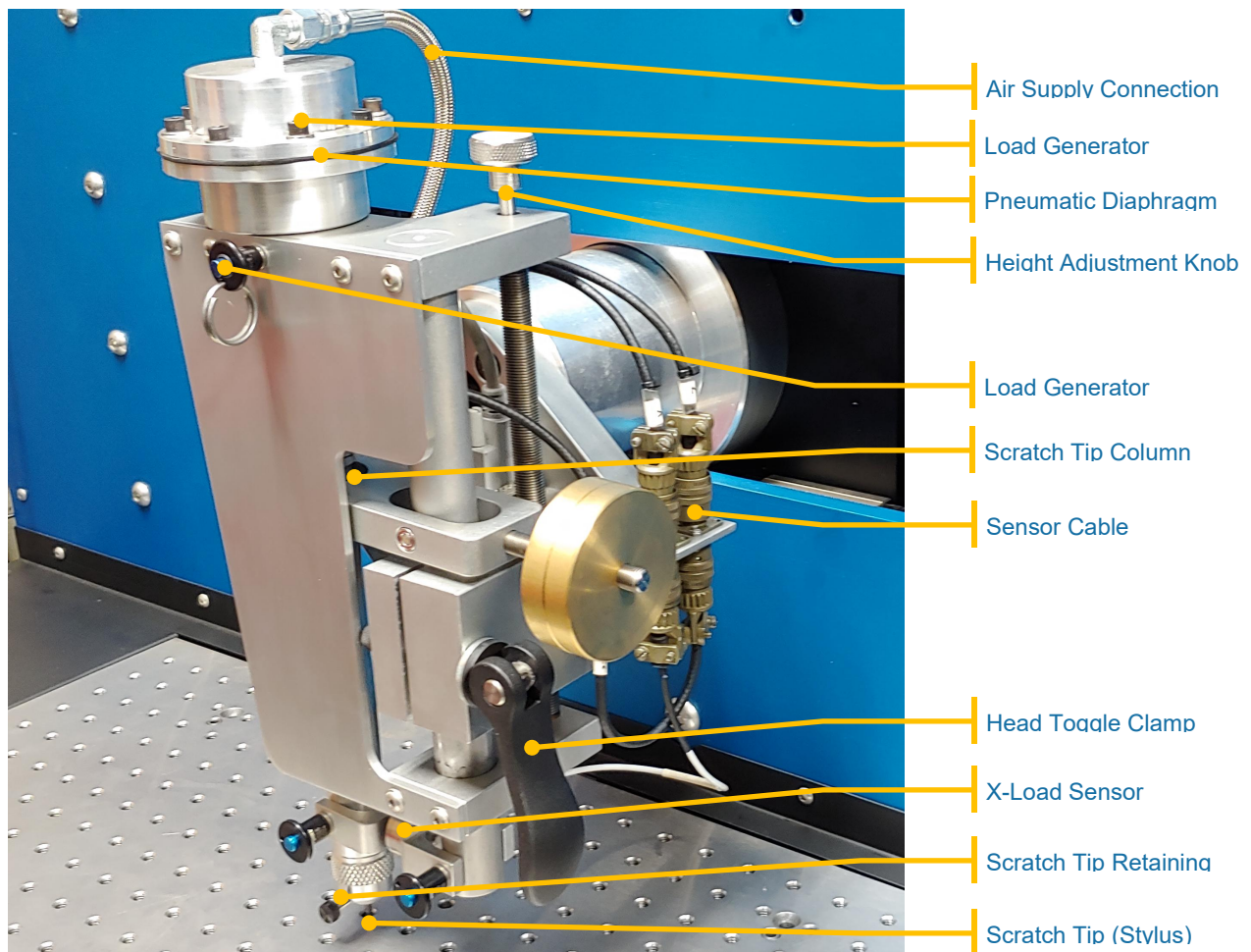
The Testing Apparatus consists of the mechanical components that are required to perform scratch tests. The Testing Apparatus can be further separated into three major parts:

- ▶ **Scratch Head Assembly** - Consists of the scratch tip and various sensors for capturing real-time data
- ▶ **Work Surface** - Precision surface where a test specimen is mounted with clamps



3.2.1. The Scratch Head Assembly

The scratch head assembly is the only removable part of the Testing Apparatus. It houses the scratch tip and various sensors used for data capturing. Great care must be taken when handling the assembly as its parts are fabricated to high precision. Individual parts with their functions are listed as follows:



Lower Part

- ▶ **Scratch Tip Column** – Holds the scratch tip
- ▶ **Scratch Tip (Stylus)** – Ploughs the surface of the specimen
- ▶ **Scratch Tip Retaining Screw** – Holds the scratch tip in place within the scratch tip column
- ▶ **X-Load Sensor** – Senses the tangential load
- ▶ **Head Clamp and Head Clamp Bolt** – Used to set the scratch tip column to the desired height
- ▶ **X-Retaining Pins** – Used to swap out the X-Load Cell Module

Upper Part

- ▶ **Air Supply Connection** – Connects the load head to the pneumatic Z-load control
- ▶ **Load Generator** – Contains the pneumatic diaphragm
- ▶ **Load Generator Retaining Pin** – Holds the generator head to the load head
- ▶ **Pneumatic Diaphragm** – Receives air from the pneumatic Z-load control and expands to apply load to the scratch tip column
- ▶ **Z-Linear Encoder** – Senses vertical displacement (depth). On generation 5 machines, this is a digital sensors. On prior generation machines, this is an analog sensor.

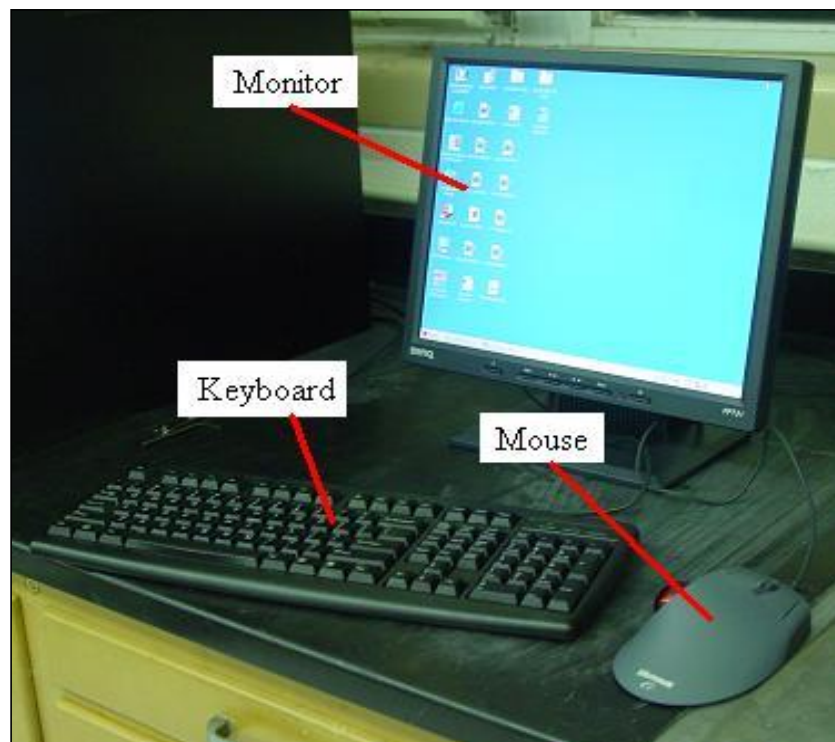
- ▶ **Height Adjustment Knob** – Used to set tip height
- ▶ **Load Head Setscrew** – Used to calibrate the Load Head

3.2.2. The Work Surface

This is a stainless steel surface on which the test specimen is mounted. The clamps that hold the specimens are attached by means of the threaded holes on the work surface. The work surface should be kept free of debris or dirt, and care must be taken to prevent damage to the work surface. The work surface is machined to a very high degree of flatness. Any dents, mars, or scratches in the work surface will degrade the accuracy of readings. You should never leave tools or hard objects on or near the work surface.

3.3. The Windows PC

This component is used by the user to input the testing parameters for scratch tests; it includes a computer, a flat-panel monitor, keyboard, and optical scroll mouse.



4. Operating the Scratch Machine

With a little practice, the basic operation of the Scratch 5 Machine can be mastered by anyone.

4.1. Startup

4.1.1. Visual Inspection of the Machine

Before testing a specimen, the Testing Apparatus should be carefully inspected.

1. Check for loose bolts in the scratch head, mounting brackets, bearings, etc.
2. Make sure that adequate clamps are available
3. Inspect the scratch tip for damage and make replacement if needed
4. Check for interference between moving parts
5. Make sure that the computer is turned on and functioning
6. Make sure that the connections to the computer are secure

4.1.2. Test Apparatus Power

The main power switch for Scratch 5 Machine is located on the right side of the Testing Apparatus. This switch will supply power to the Testing Apparatus. A red emergency stop switch is located next to power switch. This switch must be in the out position for the machine to turn on. A green light indicates that power is being supplied.

Turning On

In order to turn the machine on, follow these steps:

1. Make sure you have exited or quit the Scratch 5 software.
2. Twist the red button in the direction of the arrows so that it “pops” out.
3. Depress the green button to turn the machine on. The green button will illuminate to indicate that the machine is turned on.
4. Open the Software by finding the Scratch 5 software in the Windows Start Menu.

The machine must be turned on (green light illuminated) BEFORE the scratch software is started. The machine will not operate correctly if the software is started first.

The machine should be turned on and allowed to warm up for at least 15 minutes before performing a test. This allows the electronics to warm up to ensure accurate data collection.

Turning Off

- Push the red button.

Emergency Stop

- Push the red button.

The power off button is designed to be used as an emergency stop button. Although we do not recommend using excessive force, it is designed to be used in panic situations.

Recovering From an Emergency Stop

The machine may turn itself off, or be turned off automatically for a variety of reasons. In most cases, the machine is turned off to prevent head crash. A head crash is any scenario in which the head may strike any person, or any hard or heavy object. The machine may automatically detect other scenarios in which it emergency stops, such as overload, limit-switch cutoff, or power failure.

Although the head moves smoothly, it is very heavy and has considerable momentum. The machine is capable of generating enough energy to partially or fully destroy the Scratch Head, or to permanently damage the controls and sensors in the Scratch head.

The Scratch machine software is designed to automatically recover the machine from an emergency stop.

1. Make sure you have exited or quit the software.
2. Twist the red button in the direction of the arrows so that it “pops” out.
3. Depress the green button to turn the machine on. The green button will illuminate to indicate that the machine is turned on.

5. A Basic Scratch Test

The Scratch 5 Machine is capable of running a wide variety of scratch and mar tests, including those specified under ASTM D7027-13 or ISO 19252:2008. The Scratch 5 can also emulate other scratch standards developed by others. Some tests may require the use of specialized scratch styli. These may be acquired from Surface Machine Systems. The basic operation of a scratch using the Scratch 5 Machine and the Operating Software will result in an ASTM or ISO standard scratch test. Other types of tests may require specialized software, procedures, or equipment.

5.1. *Scratching Process*

First, the machine operator inputs the desired test parameters into the Scratch 5 Machine's control computer. This includes the test length, velocity, and loading type (constant or rising load). The Scratch 5 Machine then performs the test as programmed. During the test cycle the indenter (tip) is first lowered down until the desired starting load is achieved. Then the tip translates across the specimen at the desired velocity, while either maintaining a constant load or applying a rising load. Test data is collected and saved during the test. Afterwards, the test data and the scratched specimen are ready for analysis.

5.2. *Data Collected*

The Scratch 5 Machine collects four channels of data for each experiment. These include Normal (Z) direction load, Tangential (X) direction load, Scratch Depth (Z depth), and the tangential position of the scratch tip (X position). These four data channels are collected according to a time base interval (data capture rate), which may be set by the operator.

5.3. *Further Analysis*

The Scratch 5 Machine performs Scratch tests and records data measured during each test. It is up to the user to determine the application and content of the resulting data. For visual (aesthetic) competitive analysis, Surface Machine Systems also provides software tools for helping with analytical processes.

6. Installing the Scratch Operating Software

6.1. Installation Requirements

The following software packages are required to use the Scratch 5 Machine:

- ▶ The scratch operating software installer, available on the included CD or DVD, or by download at:
 - ▶ <http://www.surfacemachines.com/swdist/>
- ▶ The National Instruments Data Capture Driver: NI-DAQmx v. 9.0.2 or later (for Windows 2000/7/7 x64/Vista/Vista x64/XP/8/10), available from:
 - ▶ <http://www.ni.com/en-us/support/downloads/drivers/download.ni-daqmx.html#291872>
- ▶ Microsoft Windows 7/8/10
- ▶ Microsoft .NET 4.6.1
 - ▶ <https://www.microsoft.com/en-us/download/details.aspx?id=17851>

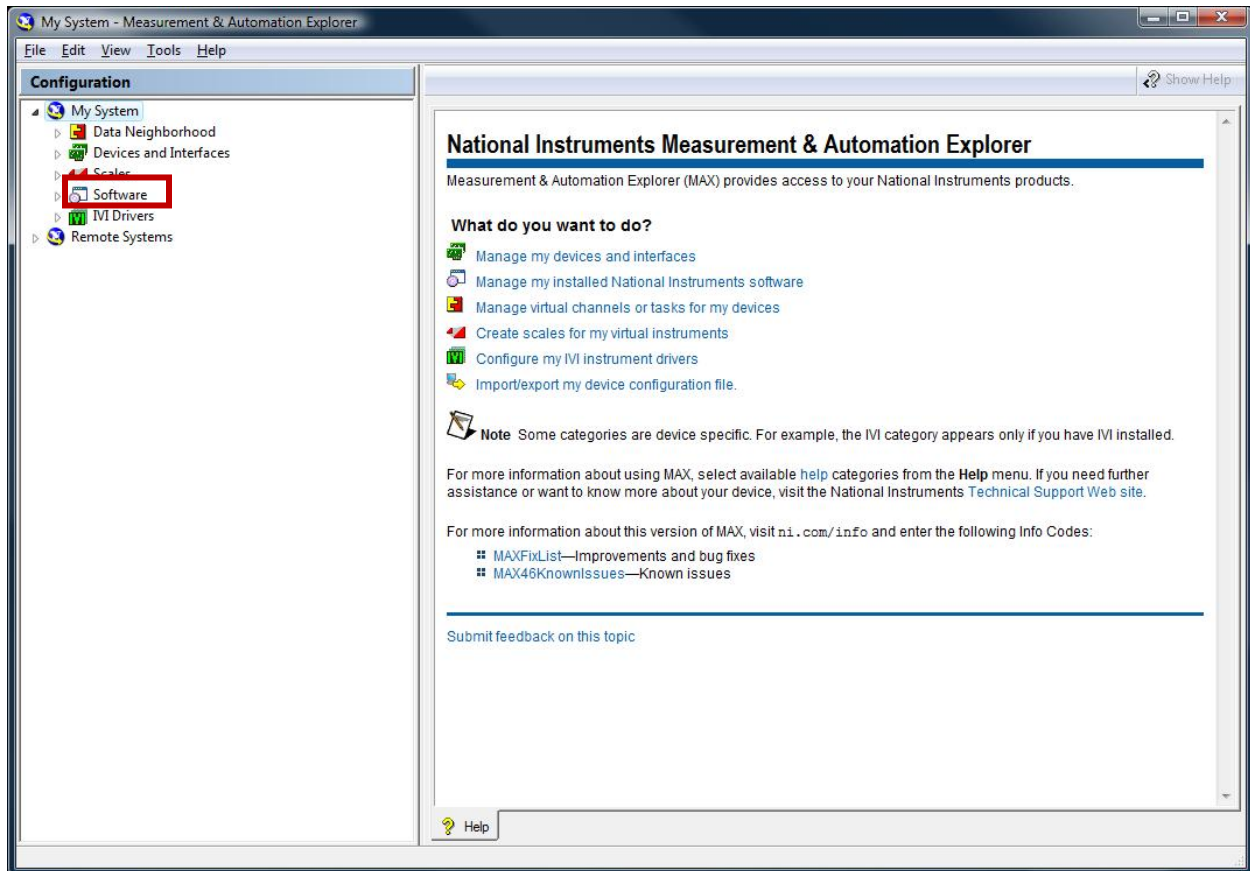
The following hardware is required to use the Scratch 5 Machine:

- ▶ A Scratch 5 Machine
- ▶ One stylus
- ▶ One Microsoft Windows-based PC, with at least 2 GB of RAM, and an NI PCI-6220 or NI PCI-6320 data capture card.
- ▶ Serial Cable and NI Data Cable, connecting the PC to the Scratch 5 Machine

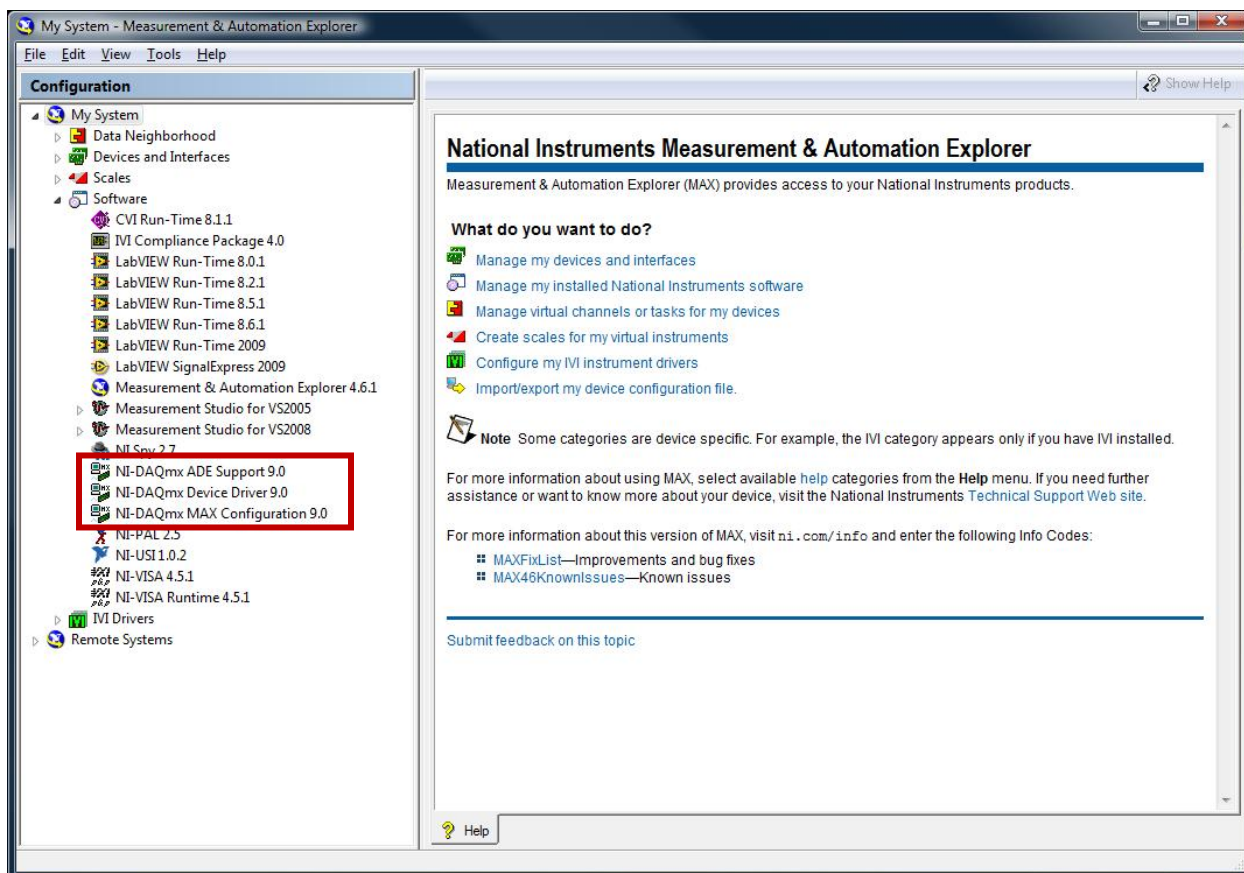
6.1.1. Verifying Driver Version

The National Instruments NI-DAQmx Driver must be version 18.6.1 or later. If your National Instruments driver is a version prior to 18.6.1, you must upgrade the driver for the software to work. To check the version number of your driver, follow these steps.

1. Click “Start”, “Programs”, “National Instruments”, “Measure & Automation Explorer”.



- Click the triangle next to the item “Software”. A list of installed software is displayed.



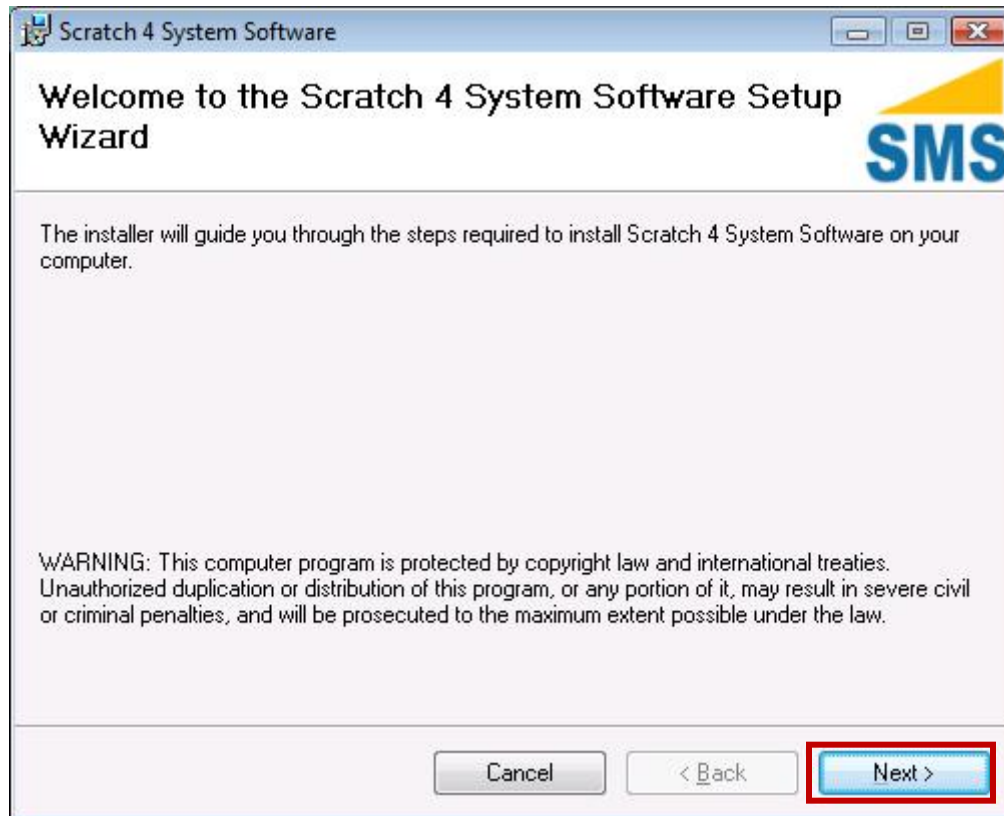
- Check the line “NI-DAQmx Device Driver X.Y.Z”. “X.Y.Z” is the driver version (9.0 in the example above). This number must be 9.0 or later. If your device driver is 8.X or earlier, you must upgrade your National Instruments NI-DAQmx Device Driver to 9.0 or later (see the section “**Installation Directions**” on page 21).

6.2. Installation Directions

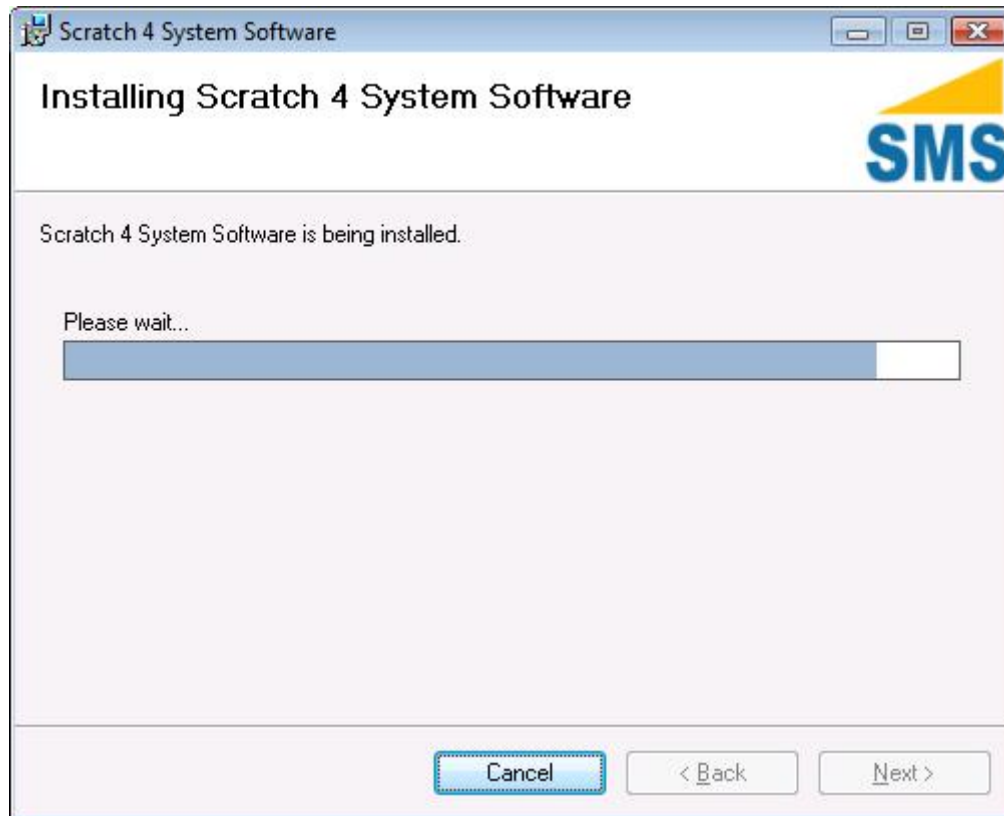
These instructions show you how to install the Scratch Operating Software and other Tools.

- Download the “National Instruments NI-DAQmx 18.6” driver from
 ► <http://www.ni.com/en-us/support/downloads/drivers/download.ni-daqmx.html#291872>
- Install the National Instruments driver.
- Download the file “Scratch4SystemSoftware_2.6.0.msi”. The software can be acquired from:
 ► <https://www.surfacemachines.com/software>

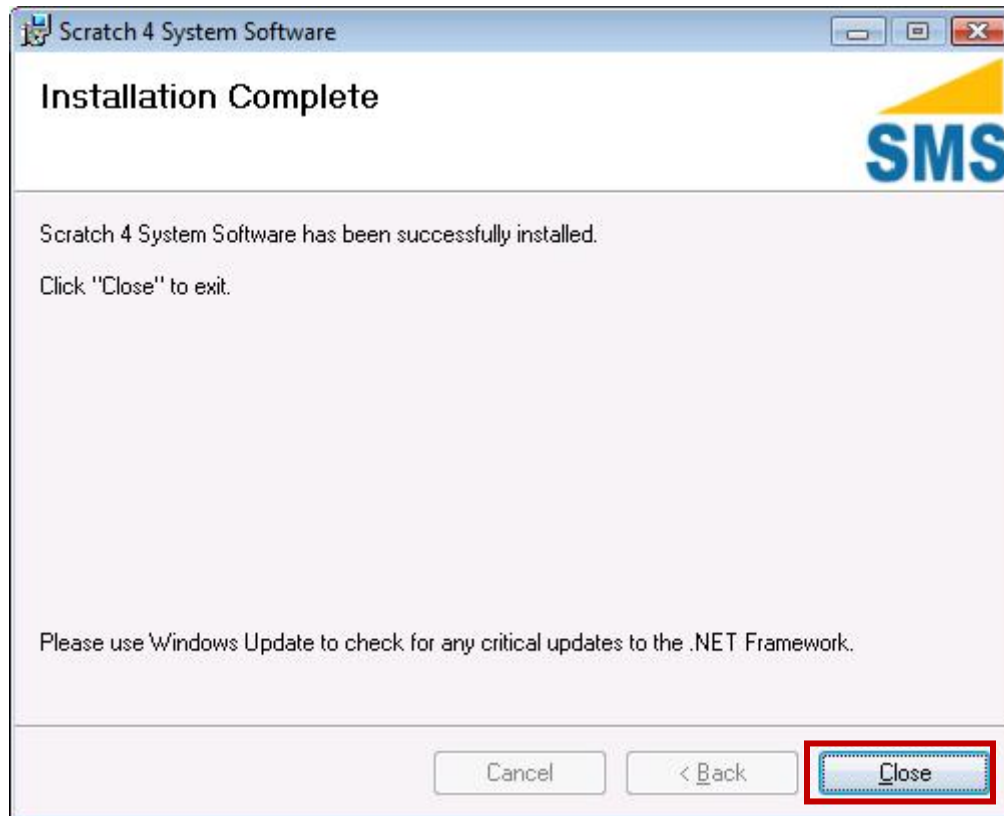
4. Double-click on the file "Scratch4SystemSoftware.msi".



5. Follow the installation instructions.

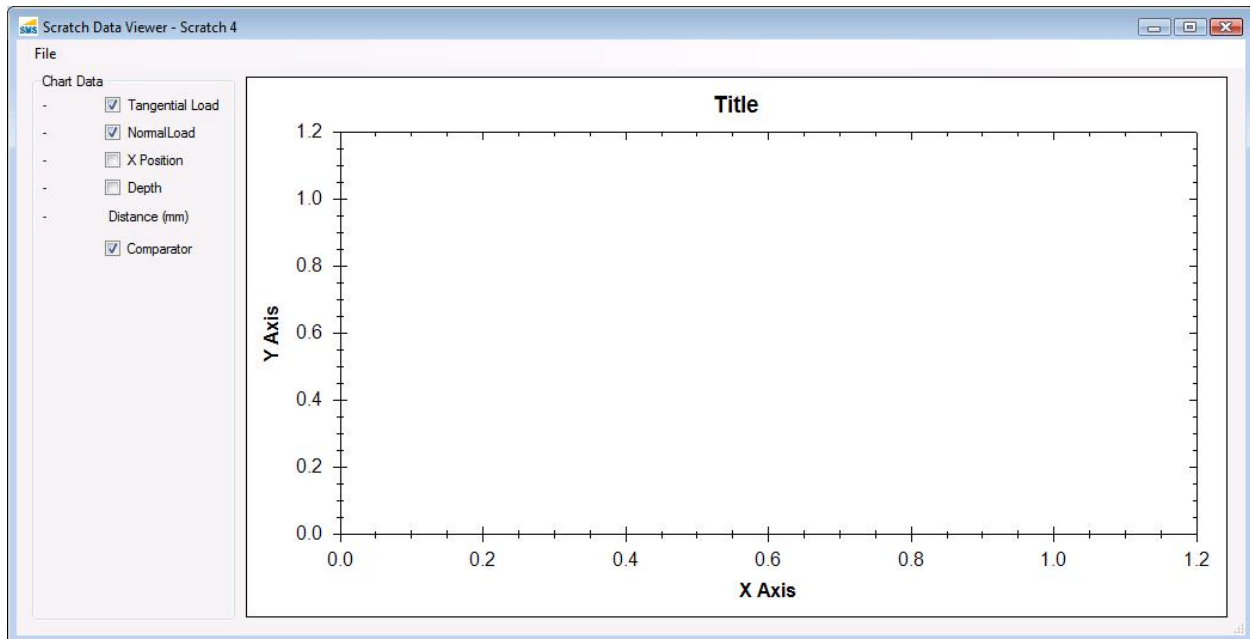


6. On a successful install, the following message will be displayed.

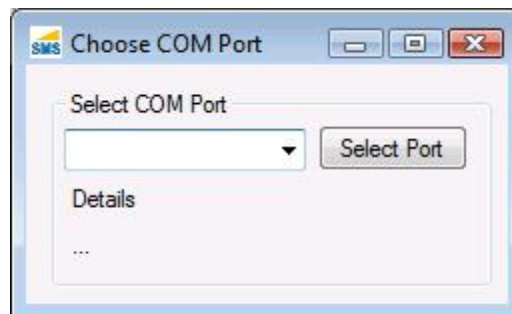


Testing the Scratch Operating Software Installation

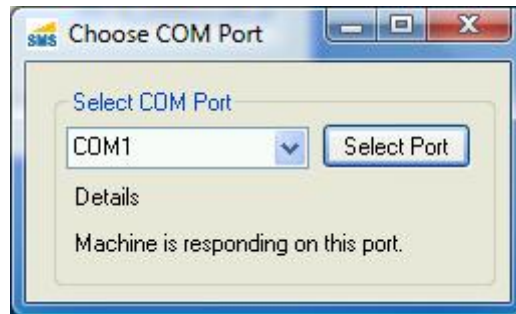
1. Click the Windows Start Button
2. Click “All Programs”
3. Click “Surface Machine Systems”
4. Click “Scratch Viewer”. A window as follows opens.



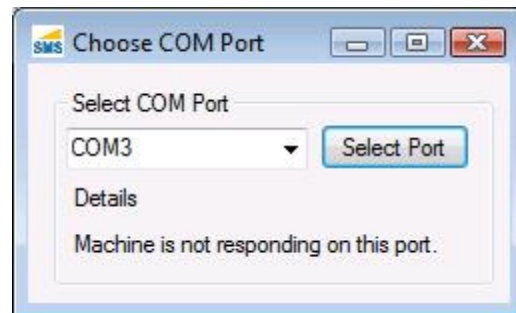
5. If you receive an error, uninstall the software, and follow the steps outlined above.
6. Turn on the Scratch Machine as described in section 4.1.2.
7. Follow steps 1 through 3 of this section
8. Click “Machine Finder”. A window as follows opens.



9. Select the first COM Port in the drop-down list.
10. Select the “Select Port” button.
11. The “Details” section should show the phrase “Machine is responding on this port”. Make a note of which COM Port you selected.



12. If the phrase “Machine is not responding on this port.” is shown, try selecting other Ports from the list. If no Ports find a machine, check the following:



- e. The machine serial cable and data cable are firmly connected to this computer.
 - f. The machine power cable is firmly connected, and the machine is powered on (green light)
 - g. If the machine does not power on, or does not respond, refer to your Scratch 5 Machine User Guide for troubleshooting information.
13. For Scratch 5 Machines, you may need to configured the digital sensor port.
 - a. If the machine cannot read the digital sensor, open the folder “C:\Program Files\Surface Machine Systems, LLC\Scratch 4 System Software”
 - b. Copy the file “ScratchOperatingSoftware.exe.config” to the desktop, and open it with Notepad.
 - c. Find the key “<add key=“DepthPort” value=“COM6”/>” and replace the value “COM6” with the COM port of the depth sensor.
 - d. Copy the config file back to the operating software folder.

7. Using the Scratch Operator Software

7.1. *Starting the Software*

The Scratch 5 Machine should always be turned on prior to starting the Scratch Operating Software.

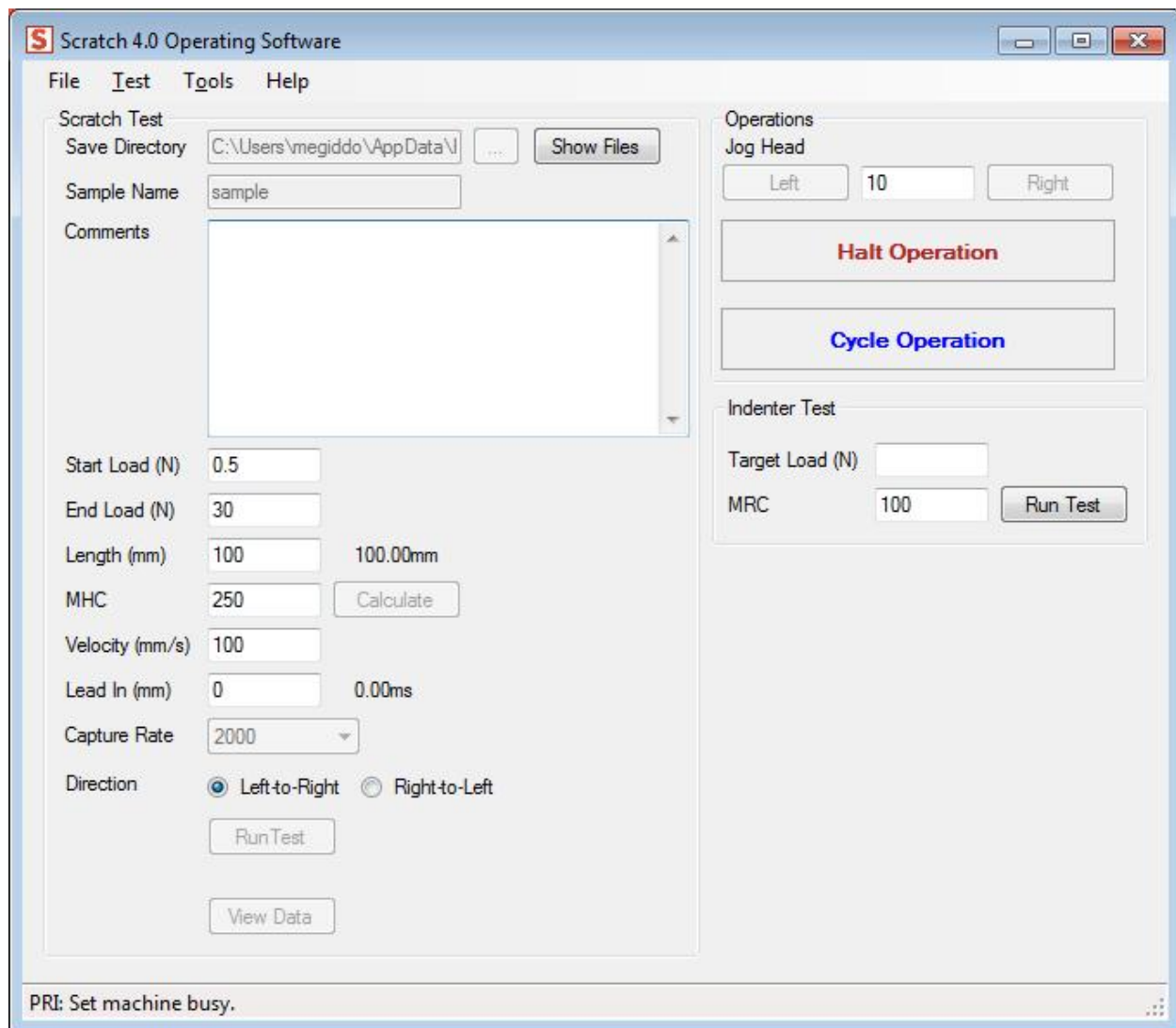
1. Ensure that the Scratch 5 Machine is plugged in to the PC via the Data Capture Cable and the Serial Cable.
2. Turn on the Scratch 5 Machine. If the Scratch 5 Machine has been off, let it warm up for 10 minutes prior to performing tests.
3. Select the Scratch Operating Software button from the Start Menu, or double-click the icon on your desktop.

7.2. *The Main Interface*

When you open the Scratch Operator, you will be presented with the following window. If this window stalls during opening, check the Windows Task Bar at the bottom for a “pop-up” window displaying a warning message, that may be hidden behind the splash screen.

SURFACE MACHINE SYSTEMS

Scratch Operating Software 2.0



This is the “Main Control Window”, and all major functionality of the Scratch Machine can be accessed from this window. When the software is opened, you will see some activity in this window below the “Halt Operation” button. The interface will also be inaccessible for several seconds after it is started while the machine is automatically reset. When the green “MACHINE READY” label is visible, the machine is ready for use.

7.2.1. Primary Features

Test Parameters

This area is used to set Scratch Test Parameters during a Scratch Test. Pressing the “Run Test” button will cause the Scratch 5 Machine to run a scratch test using the currently visible parameters.

Warning: Running a test prior to calibration, or without a sample and styli in the machine may cause permanent damage to your Scratch 5 Machine.

Please see the section “**Calibration**” on page 31 to calibrate the Scratch 5 Machine prior to running your first test. Please see the section “**Running a Scratch Test**” on page 57 to see how to run a test.

- ▶ **Save Directory.** This is the directory (folder) where test results will be automatically saved after each test. You can choose the output directory by selecting the “...” button next to the text box, and selecting an output directory.
- ▶ **Show Files.** This button opens the directory where the scratch data files are automatically saved.
- ▶ **Sample Name.** This is the name of the sample, and is also the “base name,” used to determine the file name of the test results when automatically saved. The test results will be saved in a file in the format <base name>_<number>.csv, where <base name> is the name entered in the “Sample Name” box, and <number> is a number which is incremented for each test and starts with 1. For instance, if your sample name is PP1000, then the first test results will be saved as “PP1000_1.csv” in the “Save Directory” folder. The second set of test results will be called “PP1000_2.csv”. The software will not overwrite old test results.
- ▶ **Comments.** These are test-specific comments which you can specify.
- ▶ **Run Test.** This button runs a Scratch test.
- ▶ **View Data.** This button will open the Scratch Data Viewer with the results of the last scratch test displayed. The Scratch Data Viewer can also be used to look at other scratch test data files.

Operations

This section includes basic machine operations that are not part of a test. These operations are:

- **Jog Head.** Jogging the head means to move it left or right. The jog head operation works in millimeters. Pressing the “Left” button will move the head to the left. Pressing the “Right” button will move the head to the right. Use these operations to position the head over a sample.

The Jog Head functions should never be used to run a scratch test. This can seriously damage the machine. Only the “Run Test” button should be used for this purpose, and only when the machine is properly calibrated and setup for testing.

- **Halt Operation.** The Halt Operation button can be used to halt all machine operations currently in progress. Once the Halt Operation button is pressed, the machine will attempt to come to a complete halt. The machine will not respond to any further operation requests until the Halt is cleared. See “Clearing a Halt Operation” below.

The Halt Operation button should not be used to perform an Emergency Halt. The Halt Operation button is not guaranteed to stop the machine. The only method guaranteed to stop the Scratch 5 Machine is the large red STOP button on the front of the machine. Never attempt to use the Halt Operation button to perform an Emergency Halt.

7.3. Scratch Machine Initialization

When the software first starts, if the Scratch 5 Machine is found, the software will perform an automatic hardware initialization. If the software is started up before the Scratch 5 Machine is powered on, then a manual reboot must be performed to initialize the Scratch Machine.

1. Click “Tools”, “Reset Scratch Machine”

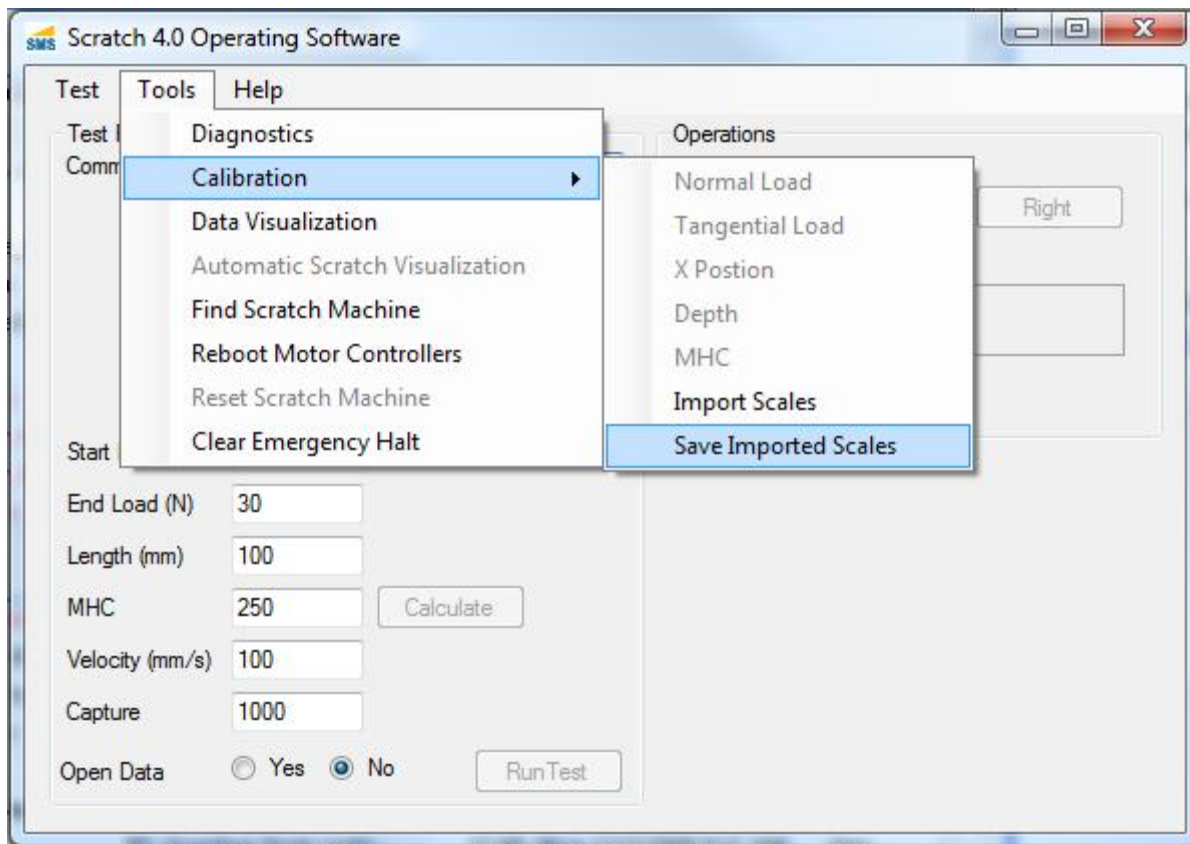
You will hear clicking noises, and a soft electronic sound. The interface will be inaccessible for a few seconds. When the operation is complete, the interface will become accessible again, and ready to perform scratch tests or other operations.

7.4. Calibration

7.4.1. Saving Calibration Scales

To Save Calibration Scales:

1. Click “Tools”, “Calibration”, “Save Imported Scales”



Calibration Scales will be saved and automatically loaded in the future.

7.4.2. Creating New Calibration Scales

The general process for creating new calibration scales is as follows. Calibration should be performed on a semi-regular basis. If the machine is used on a daily basis, the following table of calibration is recommended:

Sensor	Period
Normal Load	Monthly or when moved
Depth	Monthly or when moved (G4 and lower machines)
X-Position	When moved or suspect
Tangential Load	Quarterly or when moved

The basic procedure for performing a Calibration is as follows.

1. Select the Scale you would like to create (Normal Load, Tangential Load, X Position, Depth).
2. Apply a known load or position to the sensor.
3. Take a measurement using the built-in measurement reading tool.
4. Record the known load or position.
5. Use the automatic calibration processing tool.
6. Validate the calibration.

If, at any time, you make a mistake while creating a scale, you may reset the scale. You can do so by clicking “Calibration”, “Reset Calibration.”

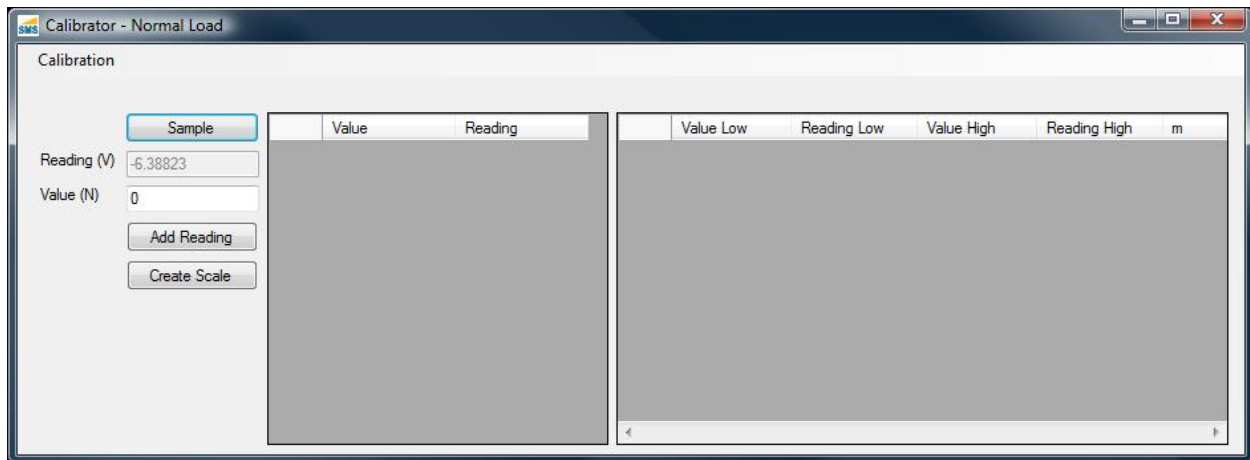
Calibrating the Normal Load Sensor

Tools

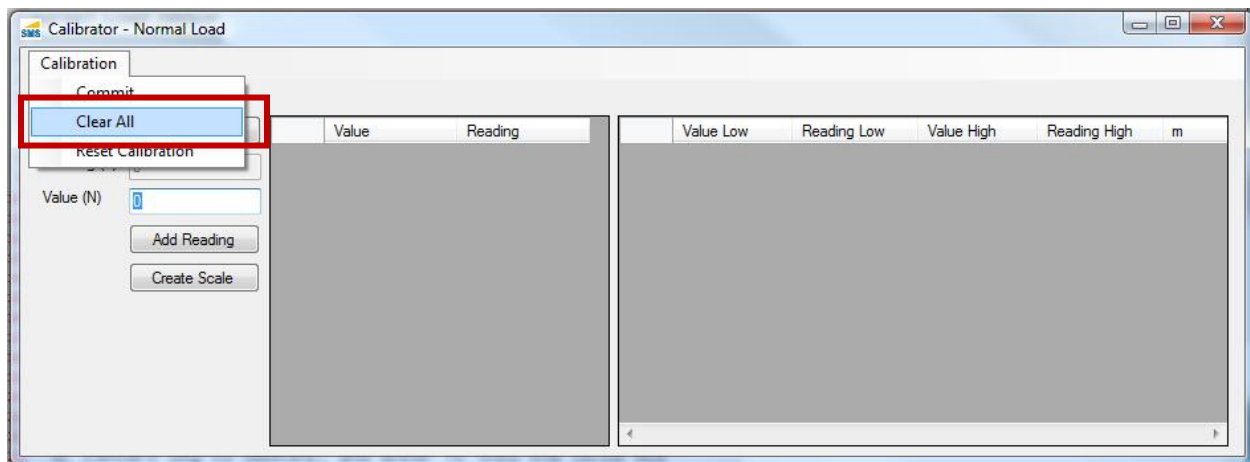
- ▶ Normal Load Calibration Piston
- ▶ 5kg calibrated mass (or 10kg for 300lbs load cells)
- ▶ Dummy Plaque
- ▶ Scratch Stylus
- ▶ Assistant

Steps

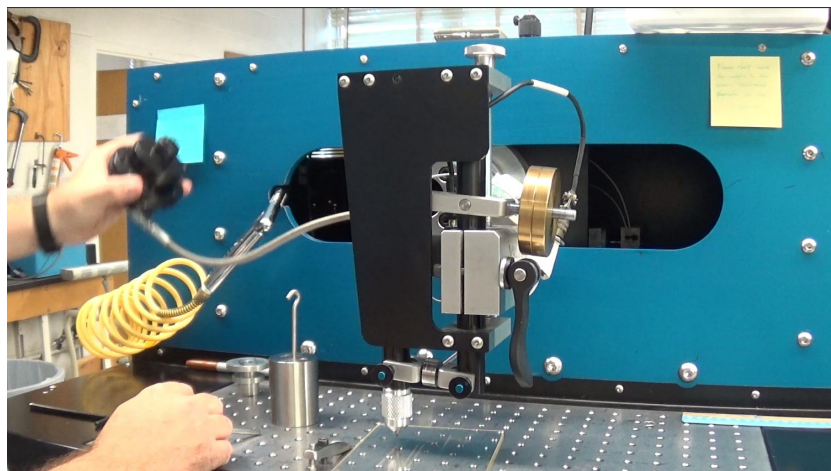
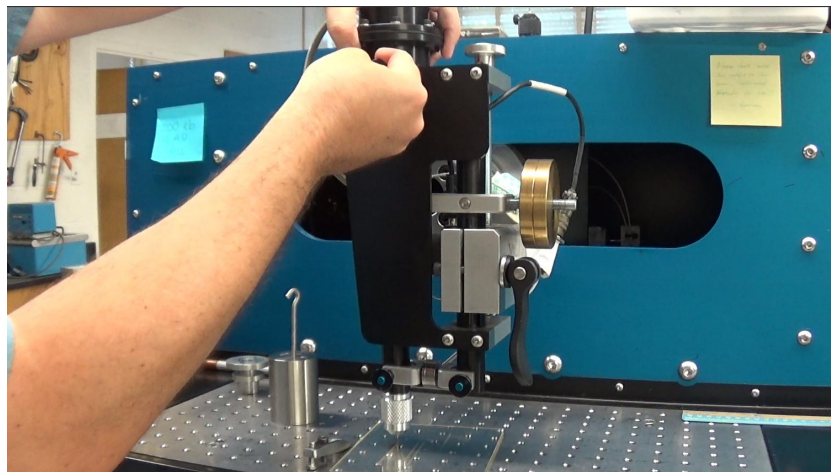
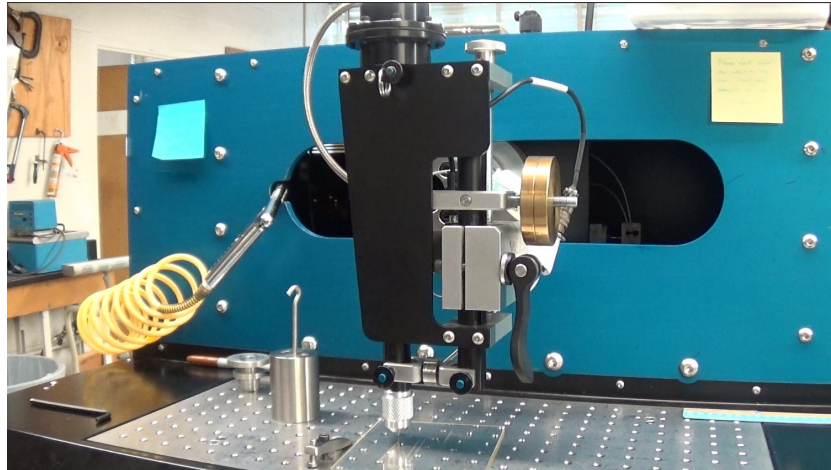
1. Ensure the Scratch machine has been turned on for at least 15 minutes prior to the beginning of the calibration procedure.
2. With the machine turned on, start the Scratch Operating Software. Let the software complete normal startup routines.
3. From the Main Window, click “Tools”, “Calibration”, “Normal Load”. The following window will open. This is the Calibrator Window.



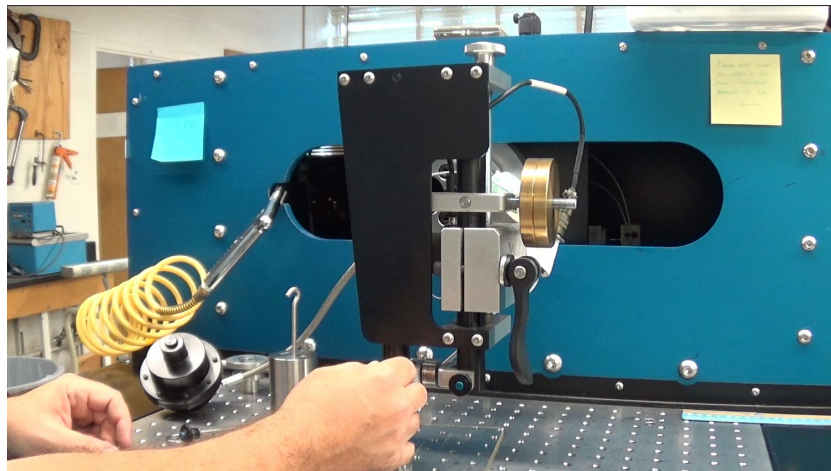
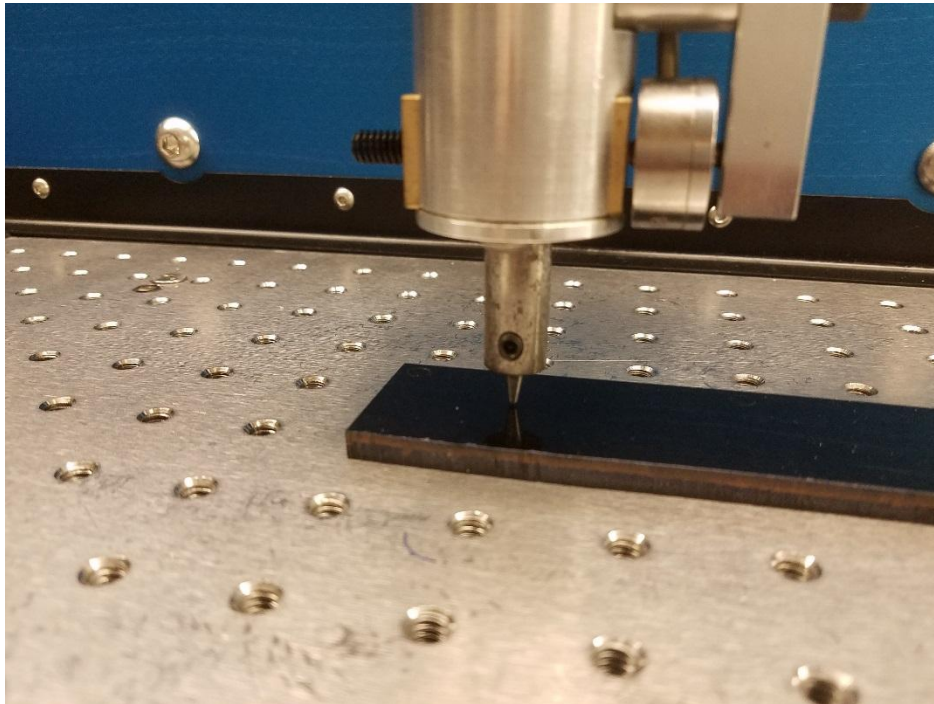
4. To calibrate the Normal Load, the previous calibration must first be cleared. Click “Calibration”, “Clear All”.



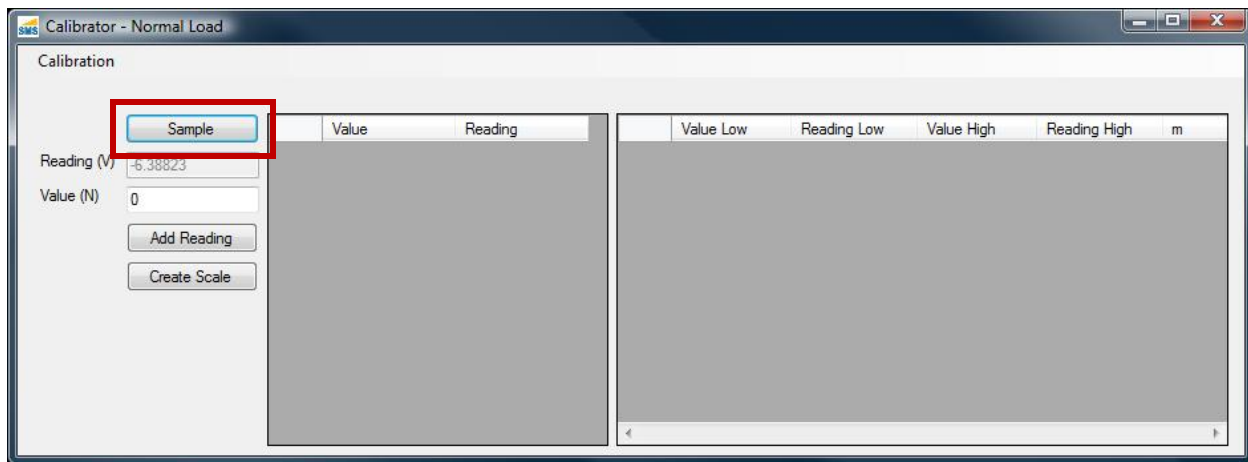
5. To calibrate the normal load, we must remove the normal load diaphragm assembly.
 - a. Place the dummy plaque underneath the Scratch Head. Make sure a scratch tip is secured in the Scratch Head.
 - b. Remove the load diaphragm assembly.



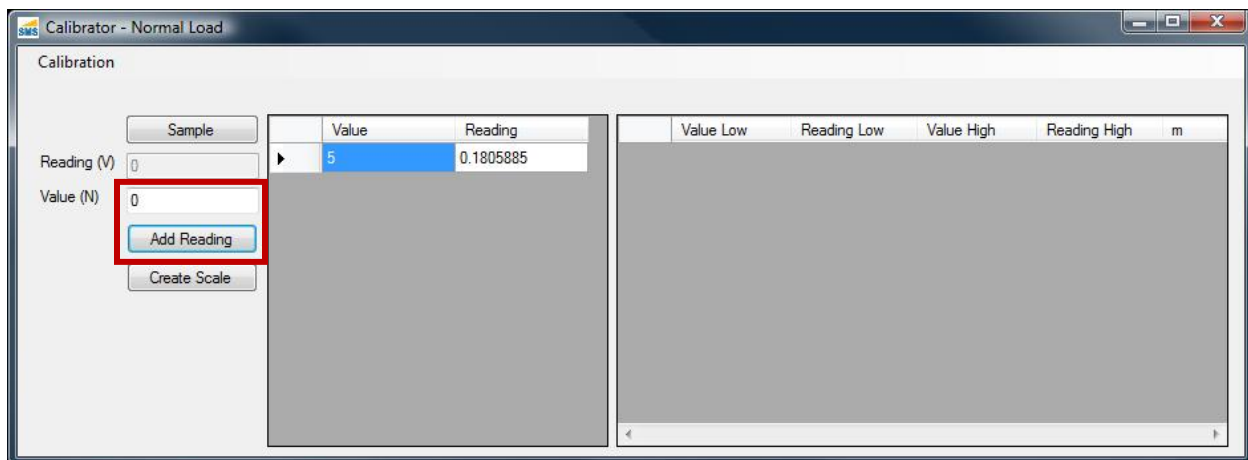
6. The first step in calibration is to find the Zero Point, or the no load data point.
 - a. Place the dummy plaque underneath the Scratch Head. Make sure a scratch tip is secured in the Scratch Head.
 - b. Holding the lower yoke assembly, lower the head until the styli is touching the dummy plaque.



- c. Click the “Sample” button in the Calibrator Window to take a Sample Reading.

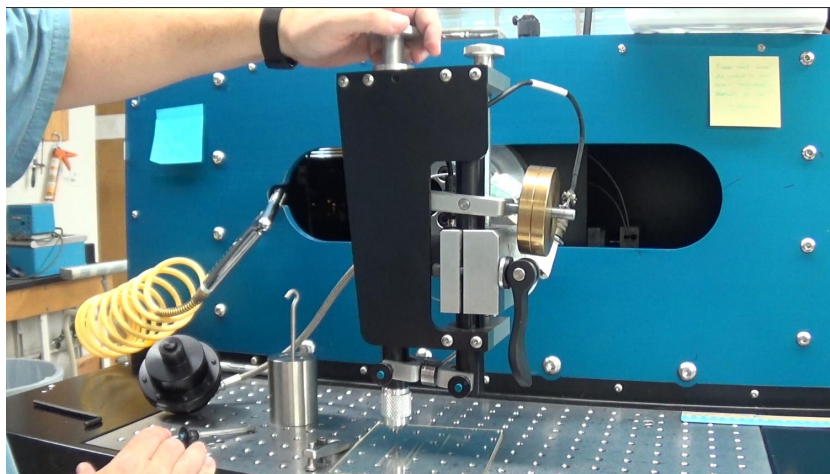
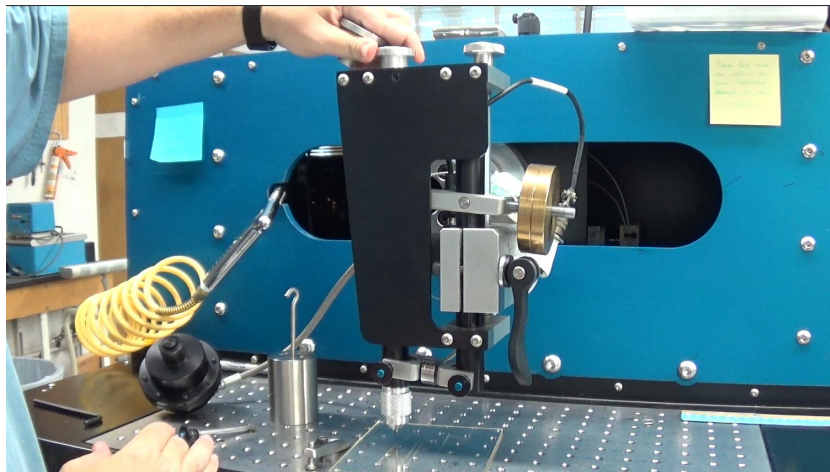
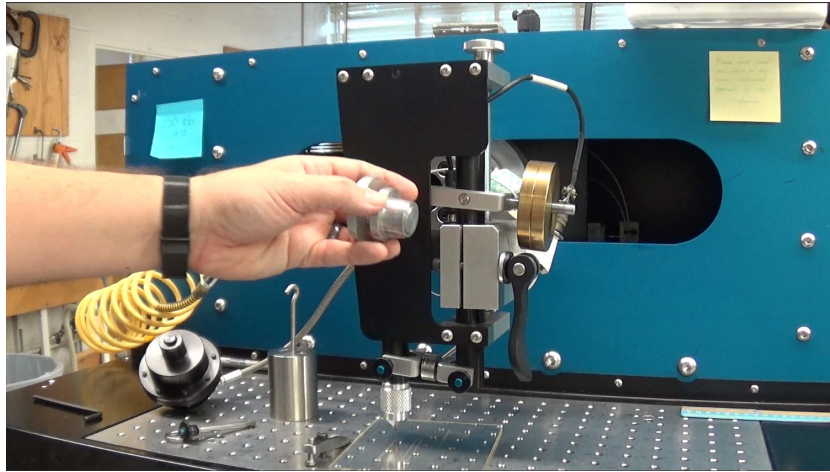


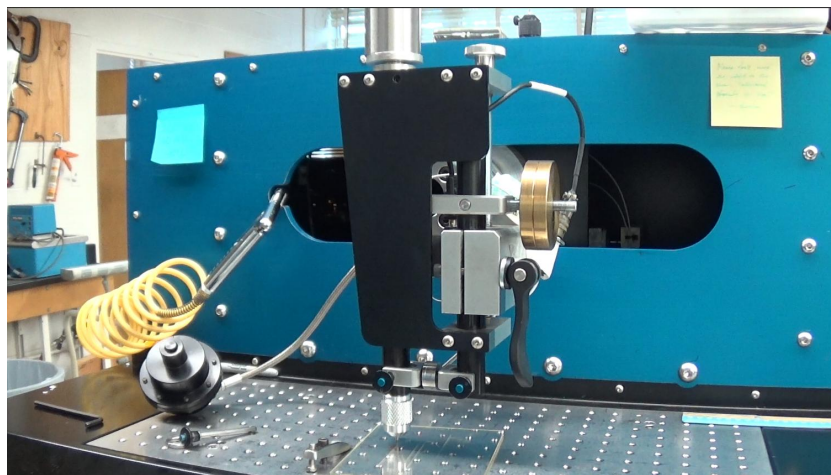
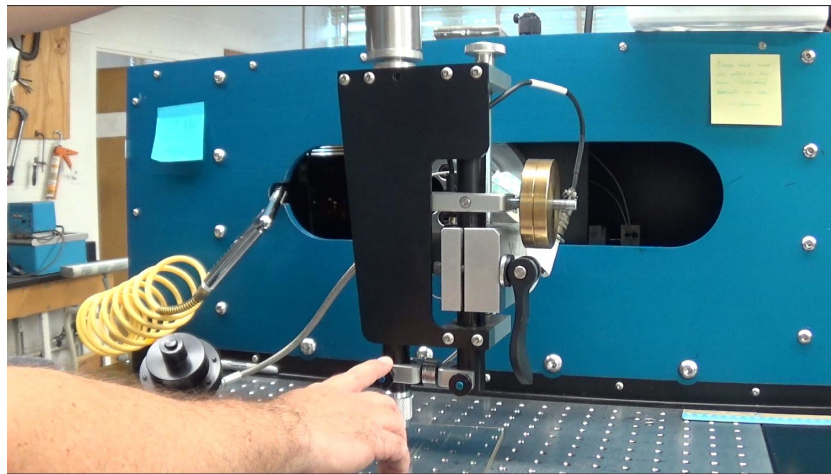
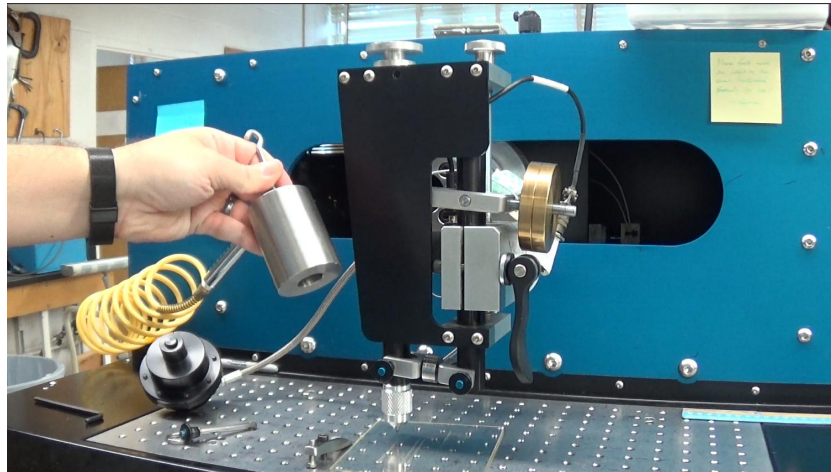
- d. Type a “0” (zero) into the “Value (N)” field, and press the “Add Reading” button.



7. In order to create a full scale, we must have at least two data points. One of the points must be the zero point (collected previously). At least one other point must be collected with a known, calibrated mass. Take your second point with a calibrated 1 kg mass (10 kg for 300 lbs load cells).
- a. Lower the scratch stylus to rest against the dummy sample.

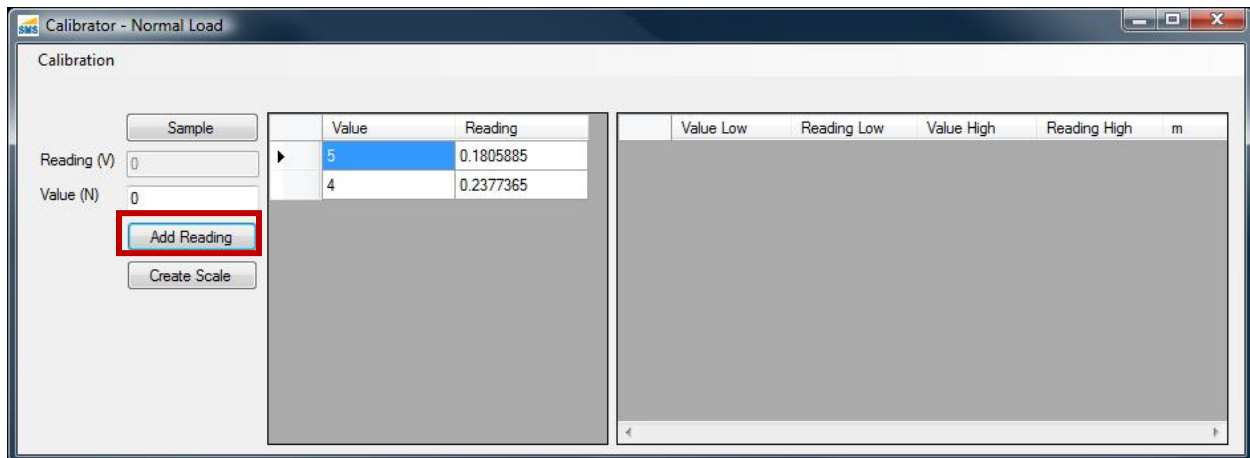
- b. Insert the calibration plunger sleeve in the top of the head. Place the calibration plunger in the sleeve. Place the 1 or 10 kg mass on the calibration plunger.



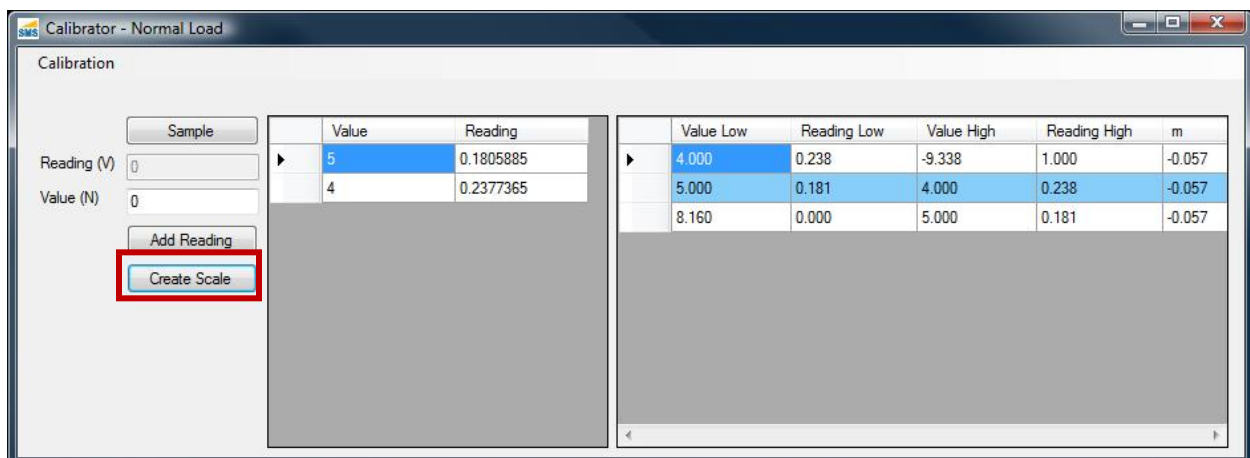


- c. In the Calibrator Window, click the “Sample” Button.
- d. Enter the Load in Newtons into the “Value (N)” field. Load in N is easily computed from the mass in kilograms times acceleration due to gravity: $1 \text{ kg} \times 9.81 \text{ m/s}^2 = 9.81 \text{ N}$.
- e. Click the “Add Reading” button.

Optional: Additional calibration points may be added. Additional calibration points are not required, but may improve the accuracy of the normal load measurement, especially for higher load tests. In order to add additional points, simply repeat steps 7Error! Reference source not found. to 7e for each additional mass that you wish to use. Only two data points (zero and 1kg) are necessary. Other calibration masses may be entered in any order, though the masses must be different. For example, 0 and 1 kg are required, though an additional mass of 5 kg may also be used to add a 3rd data point.



8. When you have finished taking measurements, create a scale by clicking the “Create Scale” button.

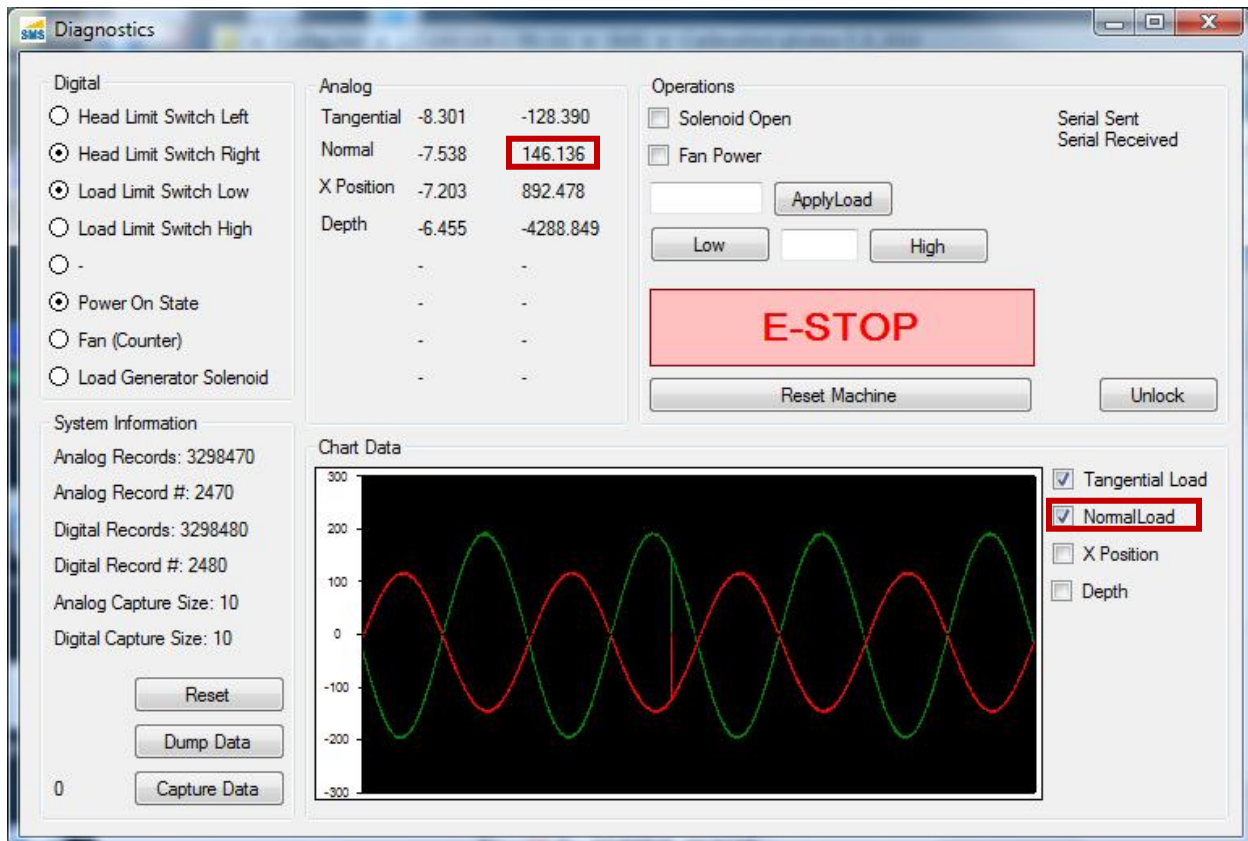


9. Save the scale by clicking “Calibration”, “Commit”. You may now close the Calibrator Window.
10. Remove the calibrated mass and reassemble the load generator.

Verifying Normal Load Calibration

All calibration should be verified prior to use. The following directions describe how to verify the Normal Load Calibration.

1. Remove the Load Generator, and place the Calibration Sleeve and Calibration Piston in the Scratch Head as described in steps **5a** and **7**.
2. Open the Diagnostics Window from the Main Window by clicking “Tools”, “Diagnostics”.
 - a. In the center top of the Diagnostics Window is a box labeled “Analog”. You will be considering the second column of numbers, and the row labeled “Normal”. The values in this field will vary rapidly with time. In the real-time graph below (“Chart Data”), you can observe values over time by deselecting all of the sensors except “Normal Load”.



The elements to consider are highlighted in red boxes.

3. Place the 1kg calibrated mass onto the Normal Load Calibration Piston as described above in step 7Error!
Reference source not found..
4. In the Diagnostics Window, the “Normal” reading in the right hand column should read 9.81
(approximately).

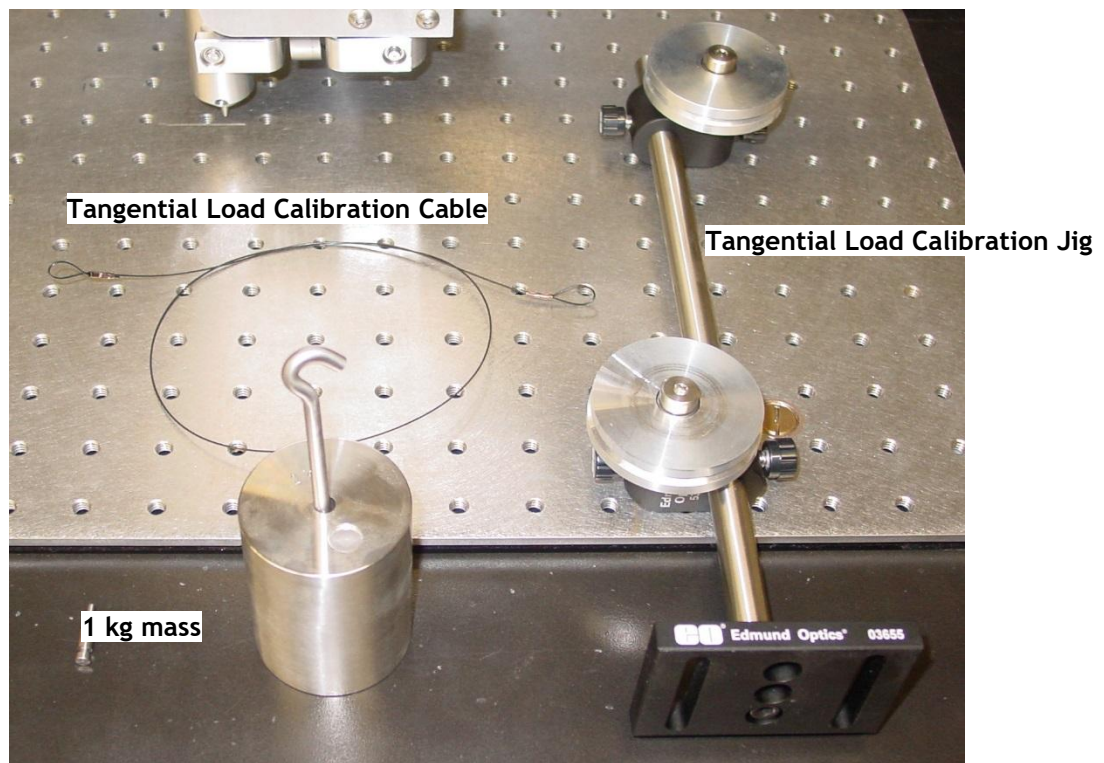
Calibrating the Tangential Load Sensor

Tools

- ▶ Tangential Load Calibration Tip Adapter

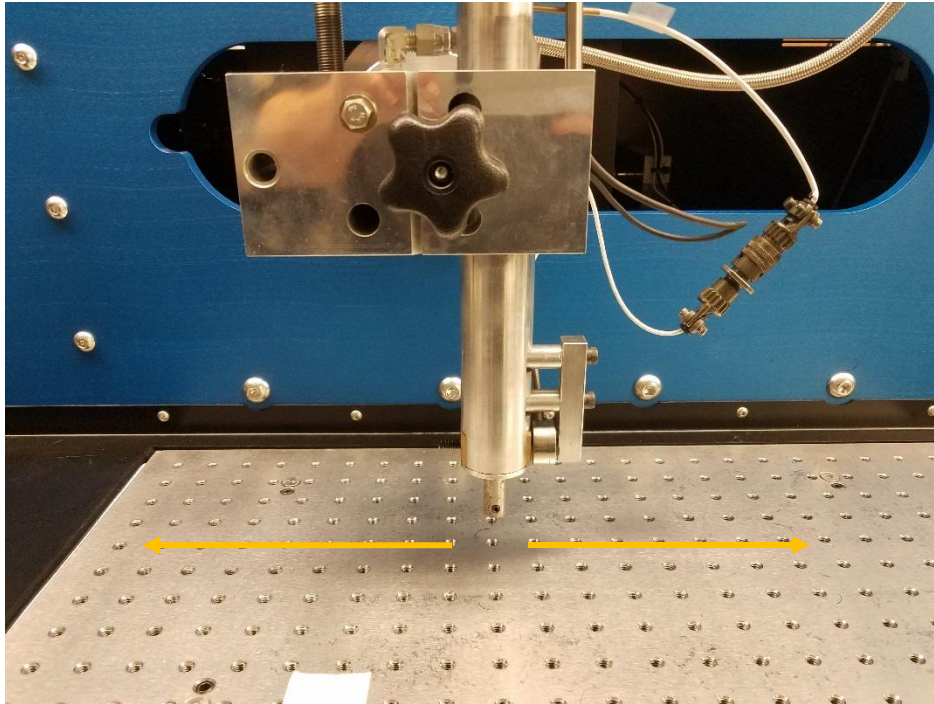


- ▶ Tangential Load Calibration Jig
- ▶ Tangential Load Calibration Cable
- ▶ Dummy Plaque
- ▶ 1 kg calibrated mass

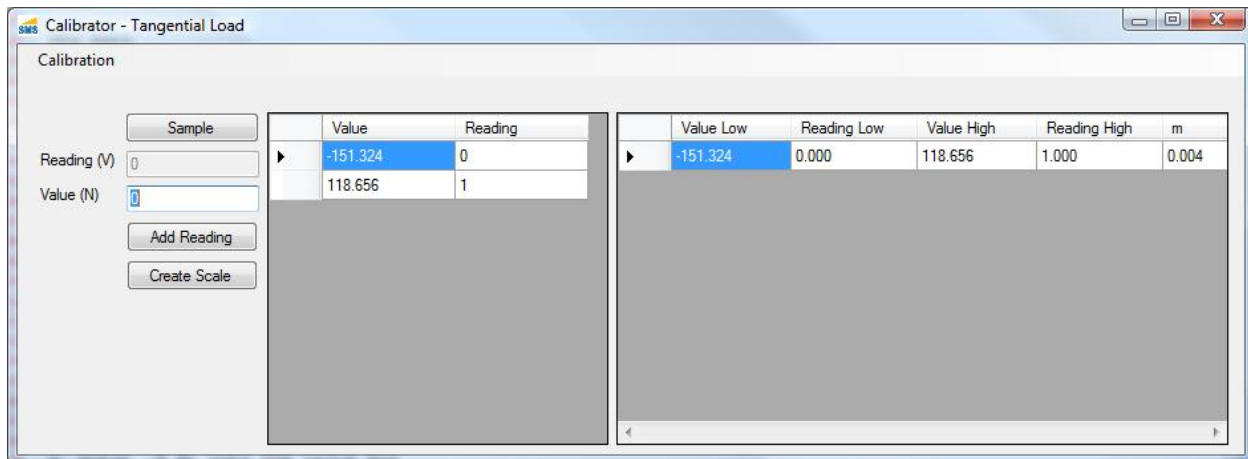


Steps

1. Ensure the Scratch machine has been turned on for at least 15 minutes prior to the beginning of the calibration procedure.
2. Jog the Scratch Head to approximately the center of the Work Surface.



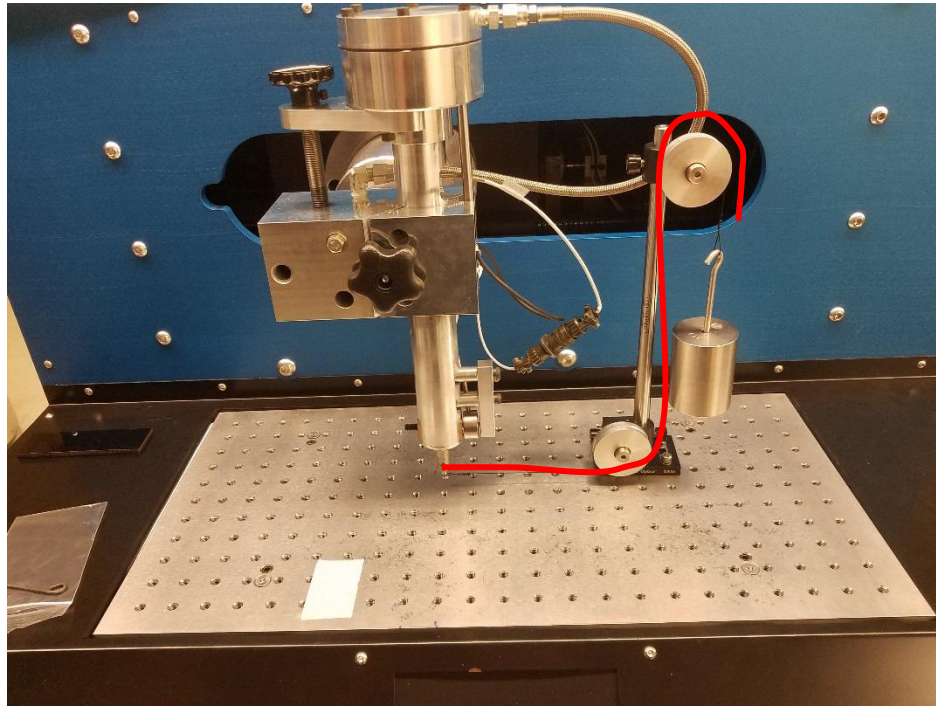
3. Place the Dummy Plaque underneath the Scratch Tip.
4. Install the Tangential Load Calibration Tip Adapter in the Scratch Head. This installs just like a normal scratch tip.
5. To create a new scale, we must get a Zero (0) point reading, and positive and negative tangential reading.
To acquire the Zero point reading, follow these steps:
 - a. From the Main Window, click “Tools”, “Calibration”, “Tangential Load”. The following window opens.

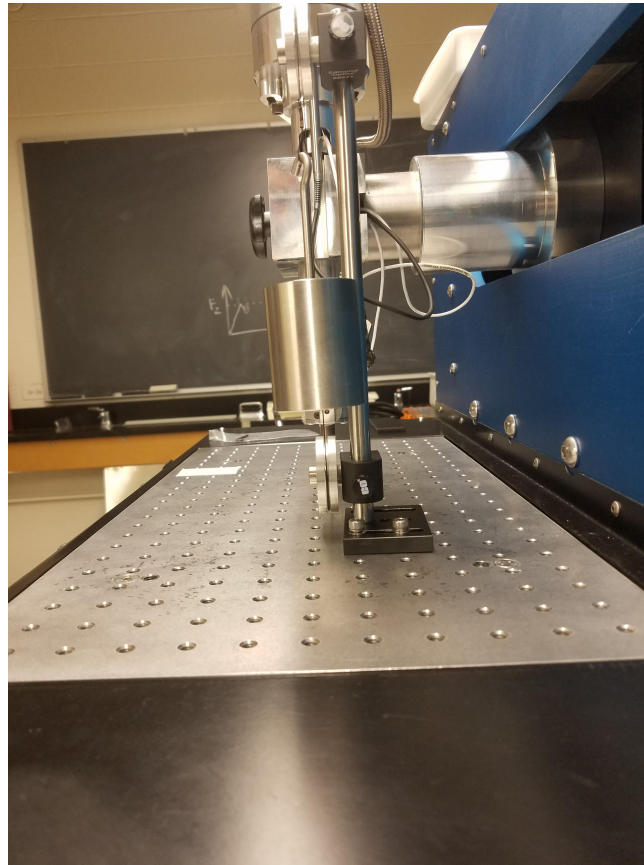


Value	Reading
-151.324	0
118.656	1

Value Low	Reading Low	Value High	Reading High	m
-151.324	0.000	118.656	1.000	0.004

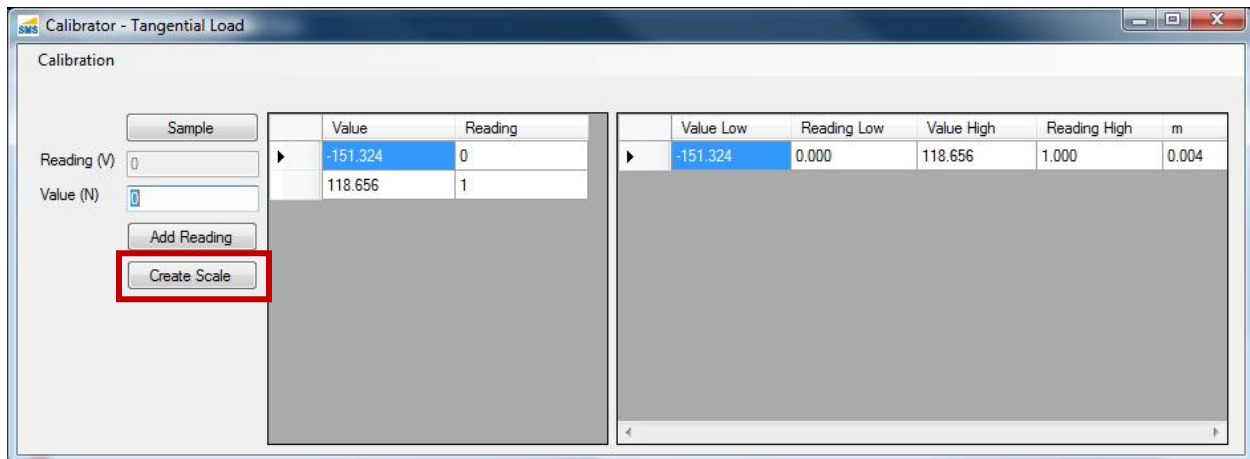
- b. Click “Calibration”, “Clear All”
 - c. In the Calibrator Window, click “Sample”, then type a 0 into the “Value (N)” text field. Click the “Add Reading” button.
6. After collecting the zero point, a positive and a negative calibration point must be acquired. To collect the negative data point, follow these steps.
- a. Install the Tangential Load Calibration Jig to the Right of the Scratch Head. The groove of the lower pulley should be aligned with the groove in the Tangential Load Calibration Tip Adapter both horizontally and vertically. You may have to adjust the Tangential Load Calibration Jig forward and backwards. You can also adjust the head height to accommodate vertical alignment.



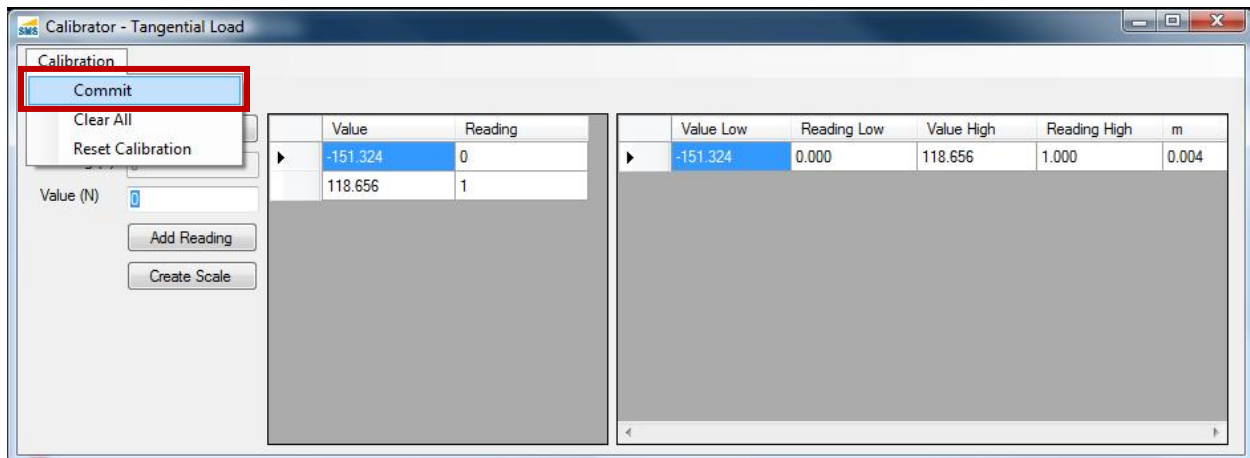


- b. Loop the Tangential Load Calibration Cable from the Tangential Load Calibration Tip Adapter, underneath the lower pulley and over the upper pulley as shown. Suspend the 1 kg mass from the free end of the cable. Make sure the mass is hanging freely in the air and is not contacting any part of the machine or calibration jig.
 - c. In the Calibrator Window, click “Sample”, then enter the value -9.81 in the Value (N)” text field. Click “Add Reading”.
7. Now collect a positive data point.
 - a. Install the Tangential Load Calibration Jig to the Left of the Scratch Head. The groove of the lower pulley should be aligned with the groove in the Tangential Load Calibration Tip Adapter both horizontally and vertically. You may have to adjust the Tangential Load Calibration Jig forward and backwards. You can also adjust the head height to accommodate vertical alignment.

- b. Loop the Tangential Load Calibration Cable from the Tangential Load Calibration Tip Adapter, underneath the lower pulley and over the upper pulley as shown. Suspend the 1 kg mass from the free end of the cable.
 - c. In the Calibrator Window, click “Sample”, then enter the value 9.81 in the “Value (N)” text field. Click “Add Reading”.
8. When you have finished taking measurements, create a scale by clicking the “Create Scale” button.



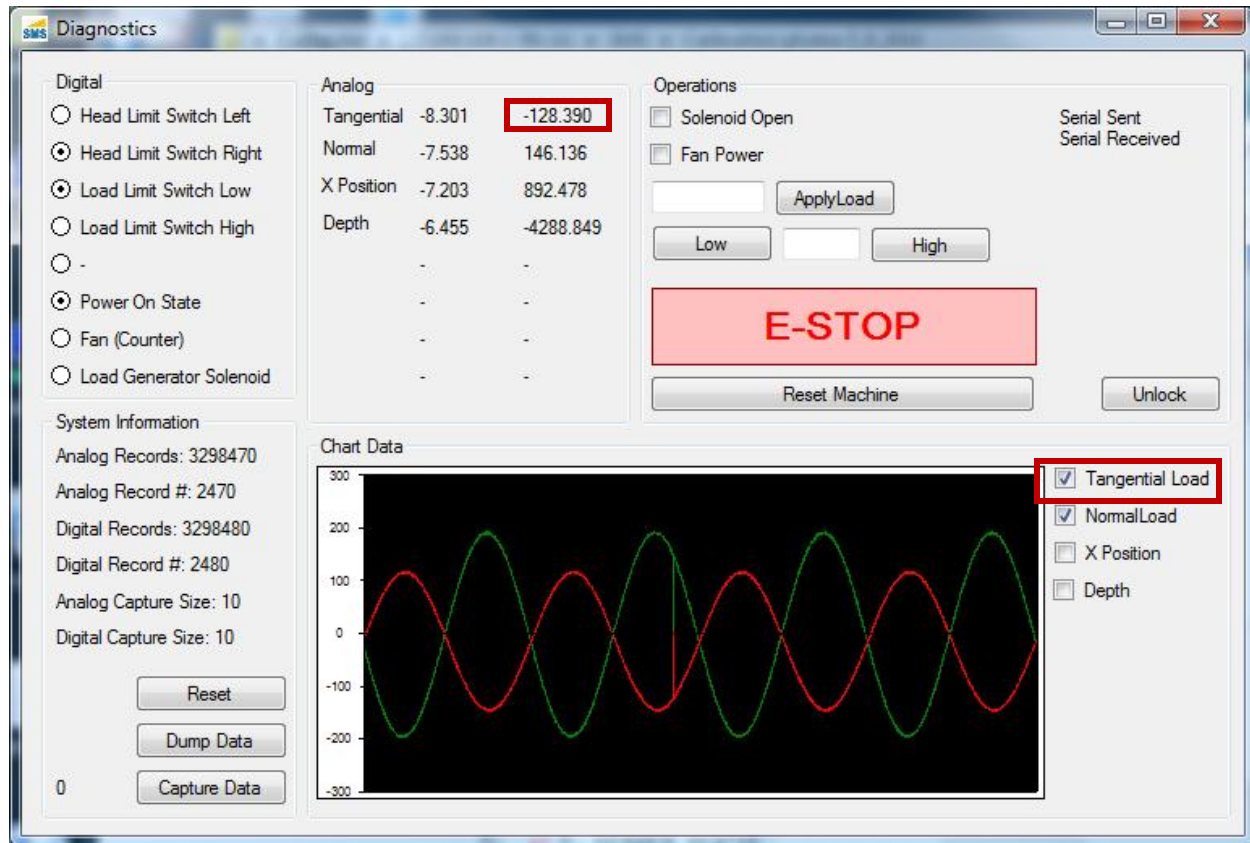
9. Save the scale by clicking “Calibration”, “Commit”. You may now close the Calibrator Window.



Verifying a Tangential Load Calibration

1. Open the Diagnostics Window from the Main Window by clicking “Tools”, “Diagnostics”.
 - a. In the center top of the Diagnostics Window is a box labeled “Analog”. You will be considering the second column of numbers, and the row labeled “Tangential”. The values in this field will vary rapidly

with time. . In the real-time graph below (“Chart Data”), you can observe values over time by deselecting all of the sensors except “Tangential Load”.



2. In the Diagnostics Window, the “Tangential” reading in the right hand column should read 0.00 (approximately).
3. Attach the 1 kg mass to the Tangential Calibration Tip Adapter and Tangential Calibration Jig as described in steps **5a** - **5**Error! Reference source not found. above.
4. In the Diagnostics Window, the “Tangential” reading in the right hand column should read -9.81 (approximately).
5. Remove the mass.
6. Attach the 1 kg mass to the Tangential Calibration Tip Adapter and Tangential Calibration Jig as described in steps **7b** - **7**Error! Reference source not found. above.
7. In the Diagnostics Window, the “Tangential” reading in the right hand column should read 9.81 (approximately).

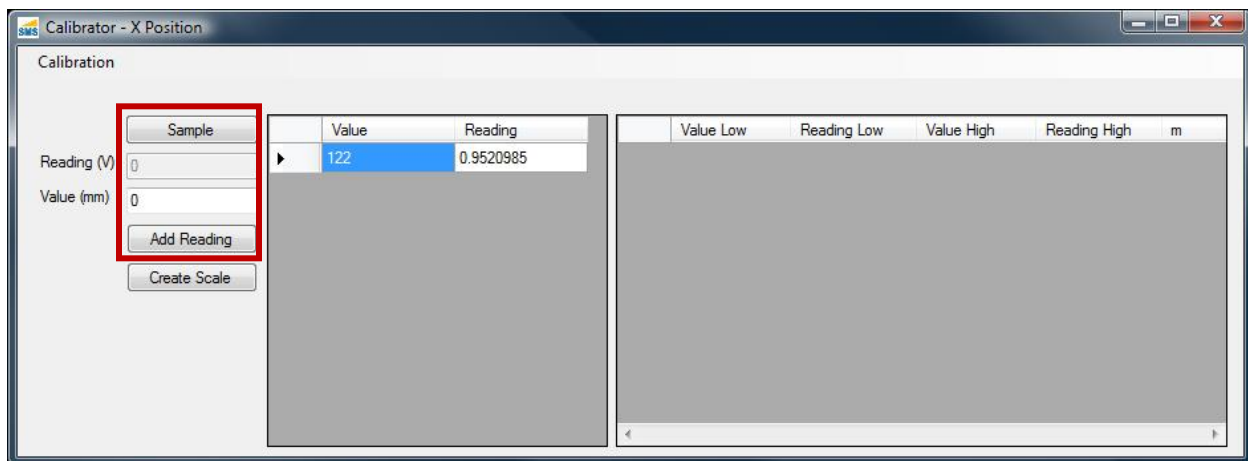
Creating an X Position Calibration Scale

Tools

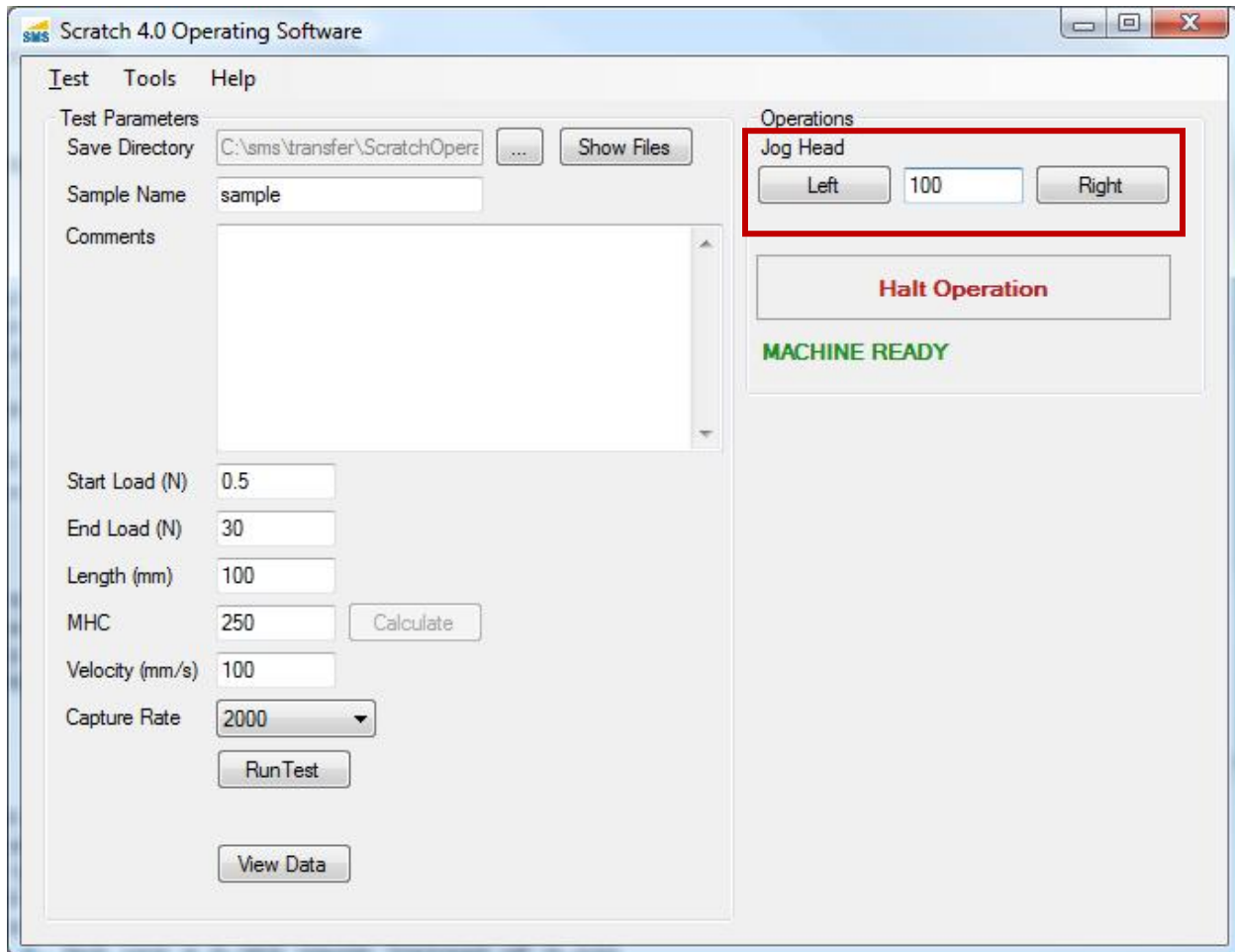
- ▶ Dummy sample

Steps

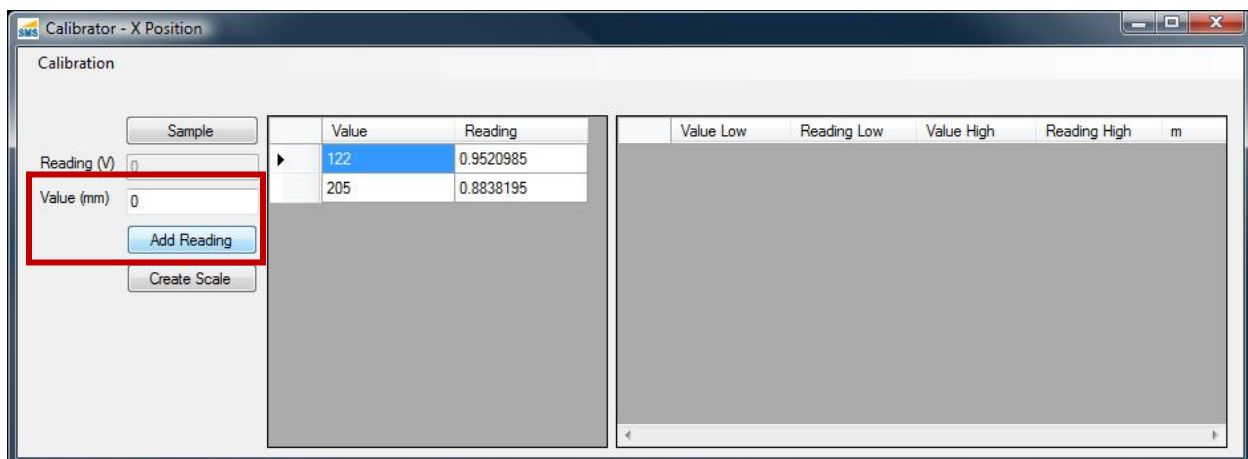
1. Ensure the Scratch machine has been turned on for at least 15 minutes prior to the beginning of the calibration procedure.
2. Center the Scratch Tip above the work surface. There should be at least 100 mm of travel in each direction.
3. Install the dummy sample below the Scratch Tip.
4. Open the X Position Calibrator from the Main Window by clicking “Tools”, “Calibration”, “X Position”.
5. Clear the current Scales by clicking “Calibration”, “Clear All”.
6. Take a zero position sample by clicking “Sample”, then “Add Reading”.



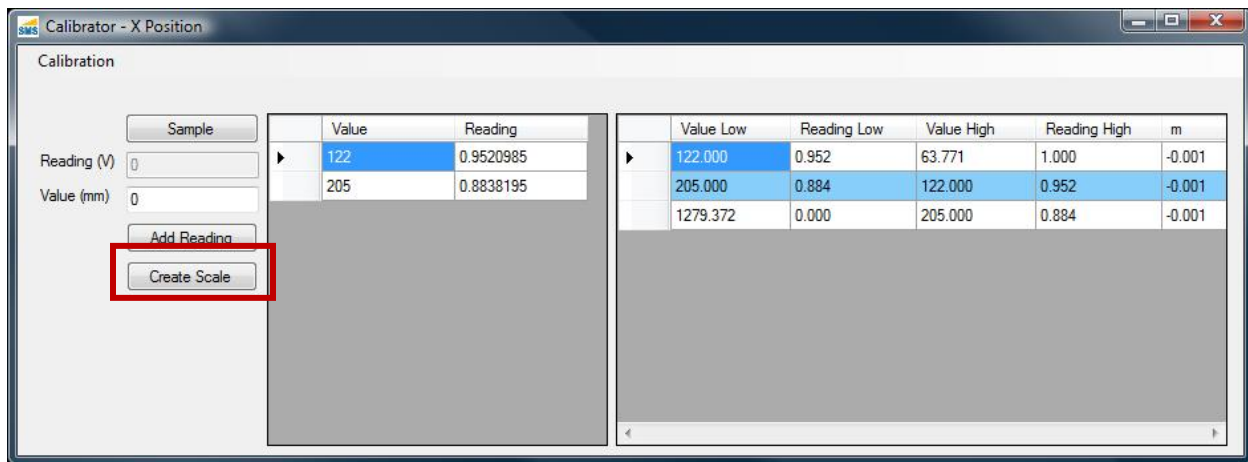
7. In the Main Window enter 100 into the “Jog Head” field in the “Operations” section. Press the “Right” button.



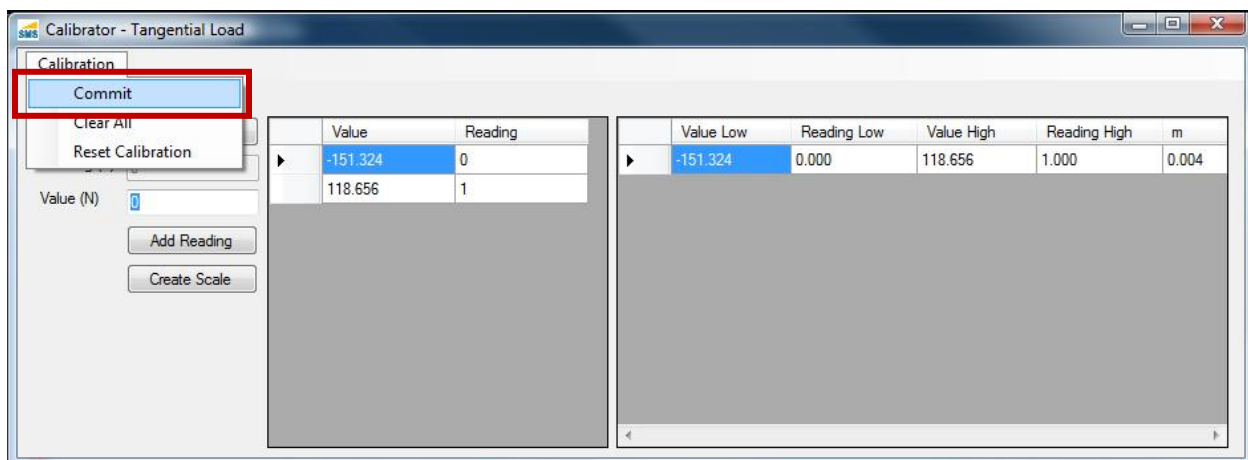
8. In the Calibrator window press the “Sample” button. Then enter “100” into the “Value (mm)” field and press the “Add Reading” Button.



9. Create a scale by pressing the “Create Scale” button.

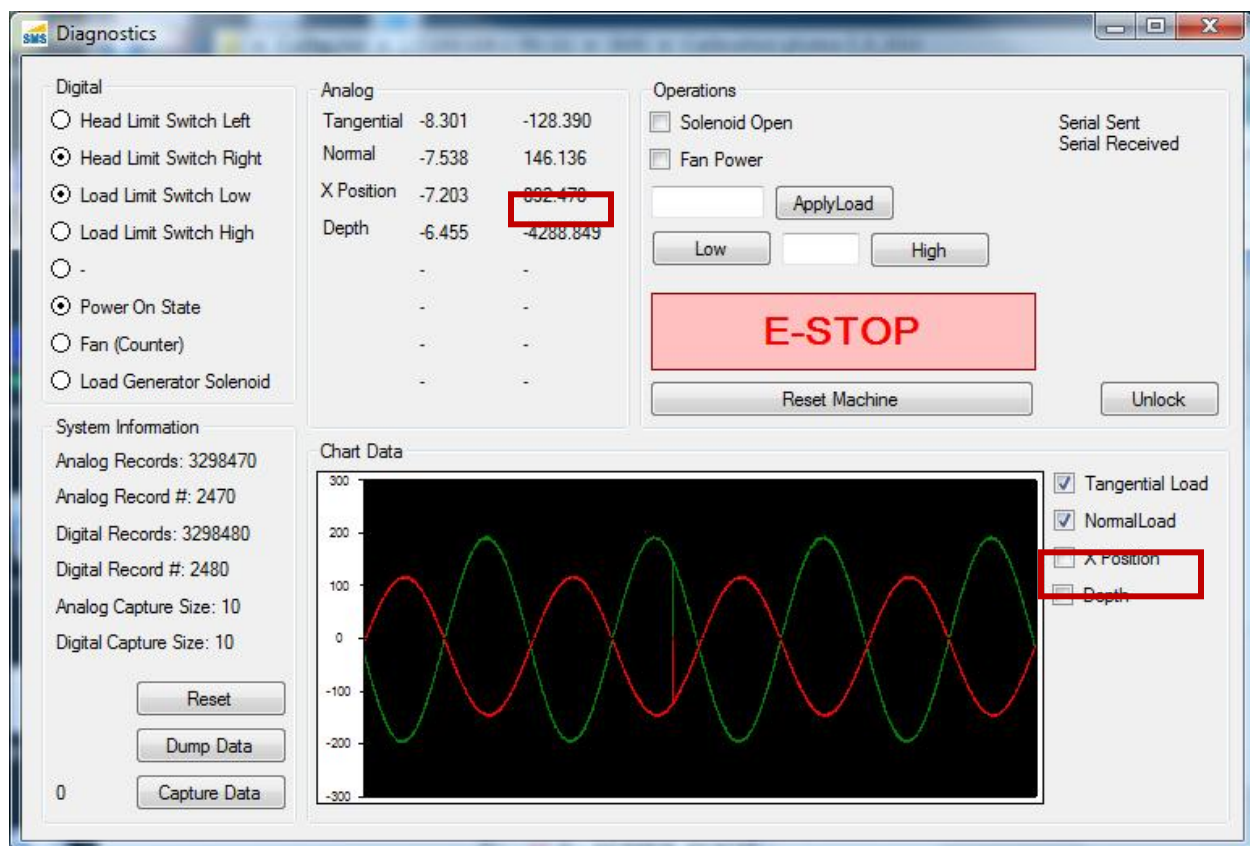


10. Save the scale by clicking “Calibration”, “Commit”. You may now close the Calibrator Window.



Verifying the X Position Calibration

1. Center the Scratch Head within the Work Surface and place the dummy sample beneath it.
2. From the Main Window open the Diagnostics Window by clicking “Tools”, “Diagnostics”.
3. In the center top of the Diagnostics Window is a box labeled “Analog”. You will be considering the second column of numbers, and the row labeled “X Position”. The values in this field will vary rapidly with time. In the real-time graph below (“Chart Data”), you can observe values over time by deselecting all of the sensors except “X Position”.



4. Record the value in the right hand column of the “X Position” row. Consider this value “A”.
5. In the Main Window enter 100 into the “Jog Head” field in the “Operations” section. Press the “Right” button.
6. Record the value in the right hand column of the “X Position” row. Consider this value “B”.
7. Subtract A from B. The result should be 100.

7.4.3. **Resetting a Calibration Scale**

If you have not committed a Calibration Scale, you may return to the previous scale as follows.

1. In the Calibrator Windows, click “Calibration”, “Reset Calibration”.

7.4.4. **Clearing a Calibration Scale**

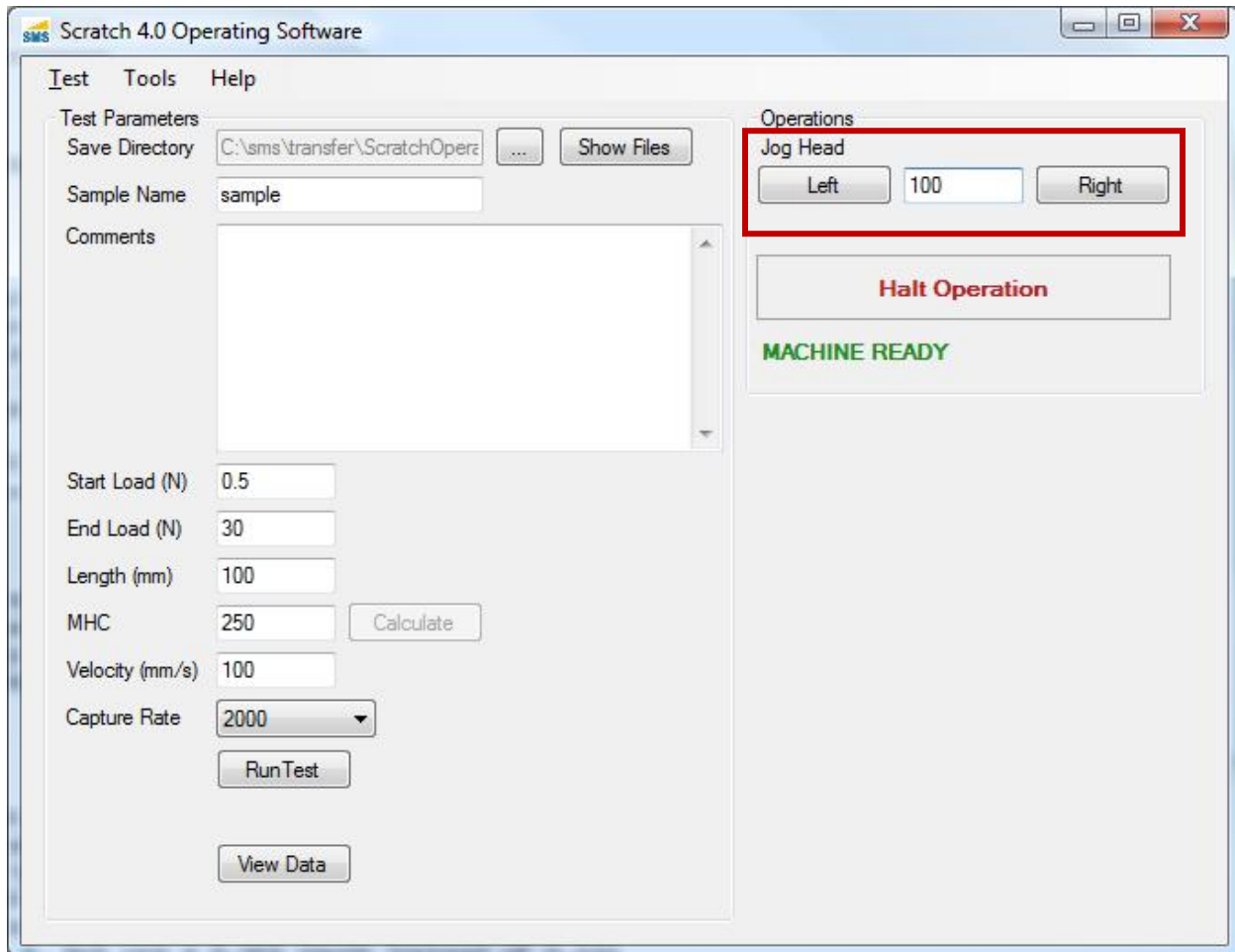
1. In the Calibrator Window, click “Calibration”, “Clear All”
2. To permanently remove this calibration, follow the steps in “Saving a New Calibration Scale”

7.5. *Jogging the Scratch Head*

The head jogging functionality allows you to position the Scratch Head over the test piece for performing a test, or to move the head to a more convenient location. Additionally, jogging the Scratch head can be used as a basic diagnostic tool for determining if the Scratch Operating software is correctly communicating with the Scratch 5 Machine.

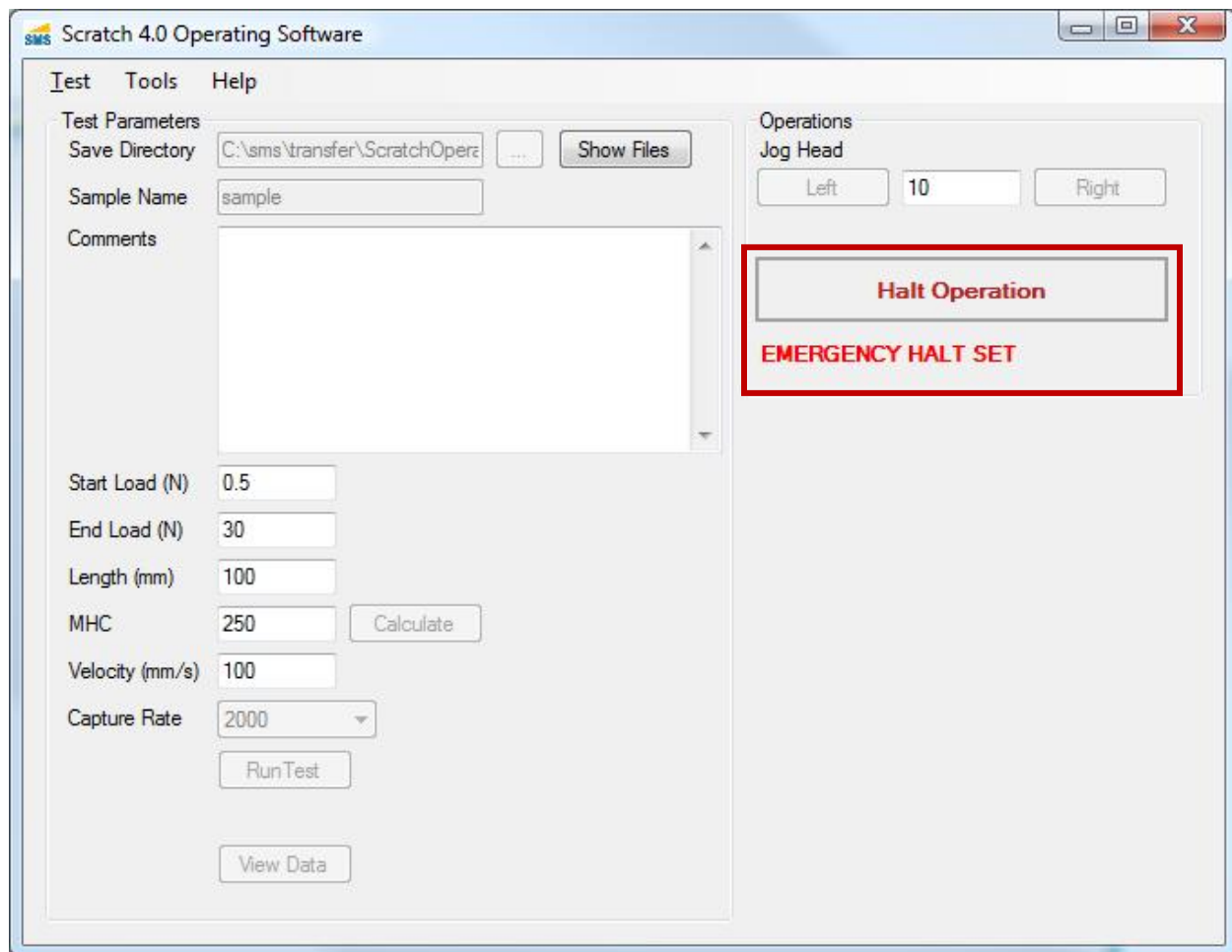
Make sure the path of the head is clear prior to jogging the head. If the scratch head runs into clamps or other objects or debris, it can seriously damage the Scratch 5 Machine.

1. Enter the number of millimeters of translation desired in the “Jog Head” form in the “Operations” panel.
2. Press the “Right” or “Left” buttons to move the Scratch Head.



7.6. Clearing a Halt Operations

If the “Halt Operation” button is pressed at any time, the Scratch Operating software will attempt to send halt commands to the Scratch 5 Machine, and quit all active operations. When this occurs, the Emergency Halt state is set. When the Scratch Operating software is in the Emergency Halt state, it will indicate the state with bright red lettering as below. While in this state, no operations will be allowed until the state is cleared.



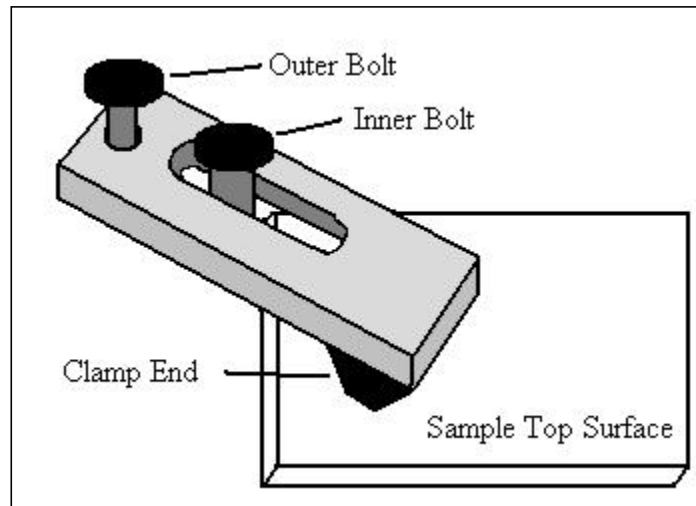
To clear the emergency halt state, follow these steps:

1. Click "Tools", "Clear Emergency Halt"

7.7. Running a Scratch Test

To run a Scratch Test, follow these steps:

1. Securely clamp the sample to the work surface. The sample must be securely clamped to the work surface. Improper clamping can result in poor data and possible damage of mechanical components. In addition, the clamps must be positioned in such a way that they do not interfere with the movement of the scratch tip head. If the scratch head assembly runs into the clamps, the clamps and the Scratch Head are likely to be damaged. To ensure a proper clamping of specimens, the following procedures are recommended:
 - a. Position the sample under the scratch tip at the intended starting point.
 - b. Use sufficient clamps to hold down the specimen; there may be a need to place clamps at intermediate points along the specimen's edges.
 - c. Ensure that the entire clamp end is on the specimen
 - d. Tighten inner bolt first into a threaded hole of the work surface
 - e. Tighten outer bolt last
 - f. Ensure that the clamps do not hinder the movement of the scratch tip head during testing



2. Clean the Scratch Tip. Prior to performing a test, the scratch tip should be inspected and cleaned of any debris that may be attached to it. This can be done by cleaning the scratch tip with compressed air or by gently running a cotton swab or a Kimwipe™ over the scratch tip.

If it becomes necessary to clean the scratch tip with solvent, it is recommended that you use laboratory grade solvents only. HPLC-grade or optical-grade solvents are ideal. Store-grade solvents often contain additives or contaminants which can affect the test in undesirable ways. For example, isopropanol (commonly known as rubbing alcohol) purchased from a pharmacy typically contains lanolin, which can act as a lubricant during testing. SMS recommends the use of laboratory grade solvents only.

3. Adjust the head height to be within 2 mm of the top surface of the specimen. To adjust the scratch head assembly for this requirement, follow these steps:
 - a. Place the test sample under the scratch tip
 - b. Turn the height adjustment knob to raise or lower the head as needed. The stylus should be as close to the sample as possible, without touching it.

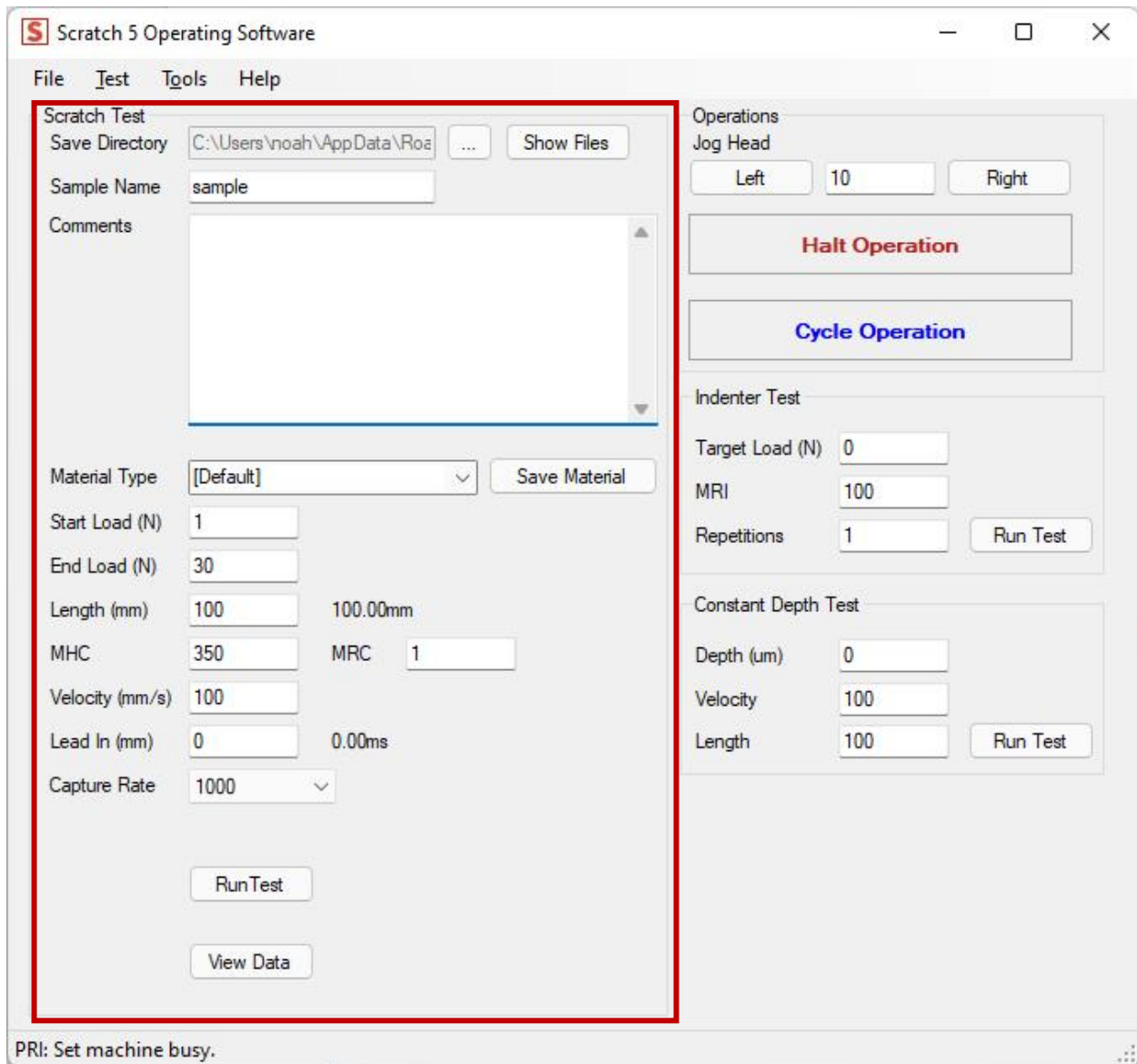
The stylus can be no more than 1mm from the work surface before the test begins.

- c. Check if the scratch tip is within 1 mm from the top surface.

If the test session calls for testing multiple specimens of the same thickness, it is acceptable to set the scratch tip head height once for that session. However, users should periodically check if the height clearance is sufficient to avoid damage to the scratch tip.

4. Enter the Scratch test parameters in the “Test Parameters” section.
 - a. Save Directory should be the location of an output folder on your computer where you want the files saved. These files will have the name <Sample Name>_<Number>.csv. <Sample Name> is the value entered in the following field. <Number> is an automatically incrementing number, which starts at 1, and increments for each test.
 - b. Sample Name is the name of the sample, and is used to determine the scratch output file automatic save name.
 - c. Comments include any additional information you would like to store with the test.
 - d. Start Load should be at least 0.5 N
 - e. End Load should be no more than 150 N (900 N for 300 lbs load cells)
 - f. The length should be no more than 1200 mm
 - g. MHC is a material-dependent constant which is determined prior to test, as detailed in section 7.10.
 - h. The Velocity should be no more than 400 mm/s
 - i. The Capture Rate determines the number of data points per second to collect. We recommend collecting approximately 10 points of data for every mm/s of Velocity. For instance, we recommend 1000 points per second for 100 mm/s. We recommend 10 points per second for 1 mm/s. For 200 mm/s and higher, set the Capture Rate to 2000.
5. Click the “Run Test” button.
6. If you want to view the test results immediately, click “Tools”, “Data Visualization” or the “View Data” button in the Main Window.

NOTE: The Data Visualization window will not update after another test is run. After each test you must go to “Tools”, “Data Visualization” in order to see the latest test data.



Scratch 5 Operating Software

File Test Tools Help

Scratch Test

Save Directory: C:\Users\noah\AppData\Roaming\Scratch 5\Scratch Test\ ... Show Files

Sample Name: sample

Comments: [Text Area]

Material Type: [Default] Save Material

Start Load (N): 1

End Load (N): 30

Length (mm): 100 100.00mm

MHC: 350 MRC: 1

Velocity (mm/s): 100

Lead In (mm): 0 0.00ms

Capture Rate: 1000

Run Test

View Data

Operations

Jog Head: Left 10 Right

Halt Operation

Cycle Operation

Indenter Test

Target Load (N): 0

MRI: 100

Repetitions: 1 Run Test

Constant Depth Test

Depth (um): 0

Velocity: 100

Length: 100 Run Test

PRI: Set machine busy.

7.8. Saving a Copy of the Scratch Test Data

If you opened the Data Visualization window after running the test, you may save the data from this window.

1. Click "File", "Save".
2. Choose the name and location of the file you would like to save.

Otherwise you can save the test data from the Main Windows by clicking "Test", "Save Scratch Data".

The scratch information from the Test Parameters will be saved in the file.

7.9. Viewing Scratch Data

The Scratch Operator includes a copy of the Scratch Data Viewer. You can view Scratch Data Files (text files or comma-delimited files—*.txt, *.csv) by using this tool.

1. Click “Tools”, “Data Visualization”
2. In the Scratch Data Viewer, click “File”, “Open”, and select a file.

The Scratch Data Viewer can only read files created by the Scratch Operating Software versions 1.x and 2.x.

7.10. Determining MHC

Determining MHC must be done on a per-system basis. MHC is a unit-less value which tells the Scratch 5 Machine how to generate the load required to meet test parameters. The primary component of MHC is the hardness of the material under test. If the head-height is adjusted, or the type of material is changed, the MHC must be recalibrated.

1. Place a spare sample of the material to be tested on the work surface, and run a test as described in section 7.7. When running this test, put the number “200” into the MHC field. In the “End Load” field, put the End Load that will be used for the tests being run.
2. View the results. If the ending load of the Scratch Test is higher than the expected End Load, lower the MHC, and run another test. If the ending load of the Scratch Test is lower than the expected End Load, raise the MHC, and run another test to verify. Tests can be run within 10 mm of each other on the same plaque or specimen. Tests should not be run within 10 mm of the edge of a specimen.

MHC is usually within the range of 160 to 240. You should adjust MHC in increments of 5 or 10.

3. Continue running tests and adjusting the MHC until the End Load is within 5% - 10% of the expected End Load.

7.11. Saving and Loading Scratch Test Parameters

The Scratch Operating software allows you to save and load the Scratch test parameters of your current project. To save your current settings, follow these steps:

1. Click “Test”, “Save Parameters”
2. Choose a file name and location.
3. Click “Save”

To load the test settings of your project, follow these steps:

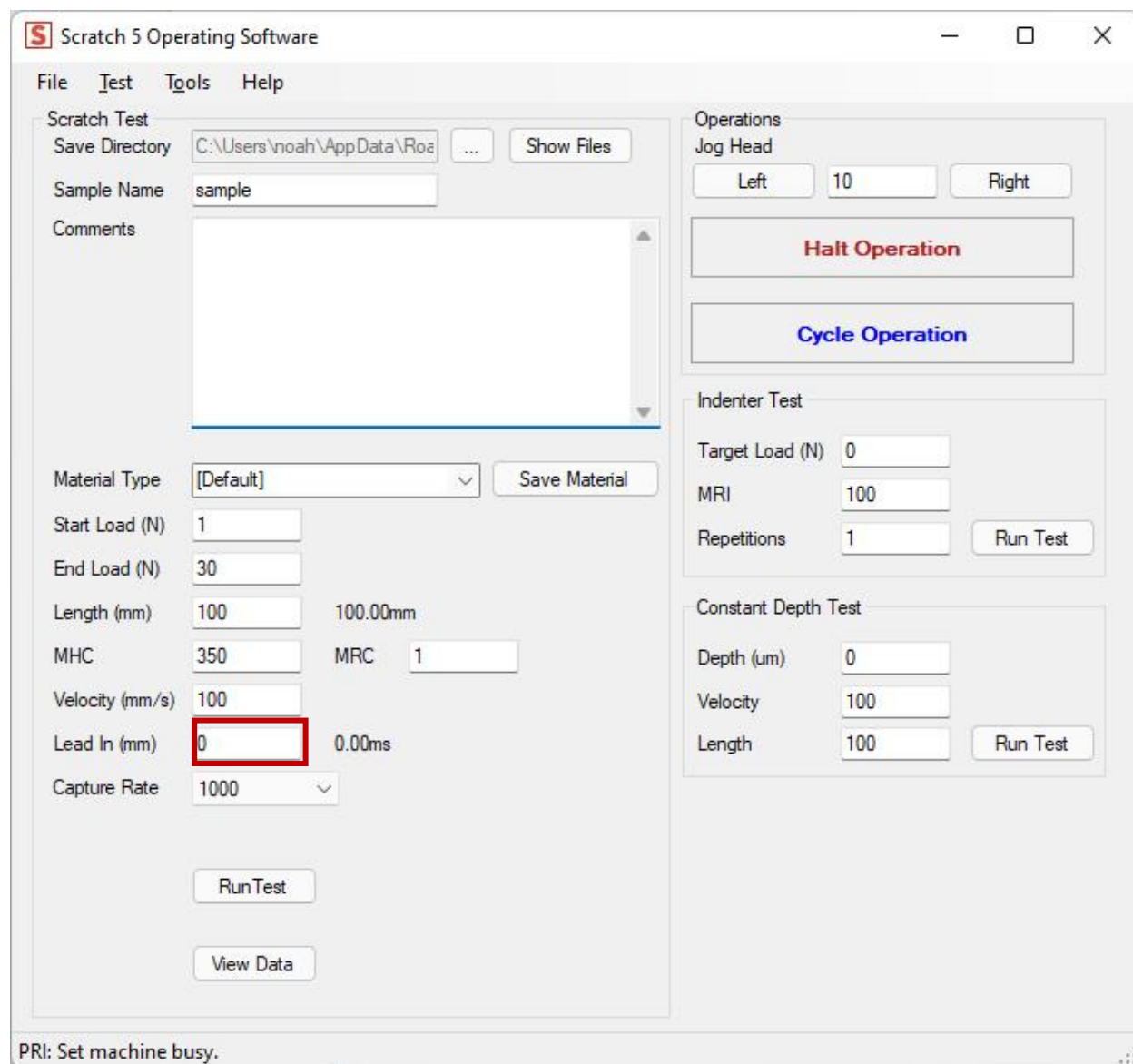
1. Click “Test”, “Load Parameters”
2. Choose the parameters project file.
3. Click “Open”

To Save a Copy of the current test parameters, follow these steps:

4. Click “Test”, “Save Parameters”
5. Choose a file name and location.
6. Click “Save Parameters As ...”

7.12. *Running a Scratch Test with Lead-In*

If you need to remove the “inertia effect” data from the beginning of a test, you may set the “Lead In (mm)” parameter. A typical length is 5 to 10mm, but will depend on initial load, velocity, and material type. The total length of the scratch will be increased by the lead in amount. So a 100mm scratch with 10mm of lead in will be 110mm in total length.



7.13. Adjusting Initial Descent Rate (MRC)

The initial descent of the stylus during a scratch is very slow to minimize relaxation while hunting for initial load. The speed of this descent is determined by the MRC value. You may increase the speed of the initial descent by raising the MRC value. The value should be kept below 5. Higher values will improve the setup time of a test, but may result in “false starts” where the amount of relaxation measured in the sample exceeds the internal validation limits, the test will halt and fail to start.

Scratch 5 Operating Software

File Test Tools Help

Scratch Test

Save Directory: C:\Users\noah\AppData\Roaming\Scratch 5\Scratch Test\ ... Show Files

Sample Name: sample

Comments: [Text Area]

Material Type: [Default] Save Material

Start Load (N): 1

End Load (N): 30

Length (mm): 100 100.00mm

MHC: 350 **MRC 1**

Velocity (mm/s): 100

Lead In (mm): 0 0.00ms

Capture Rate: 1000

Run Test View Data

Operations

Jog Head: Left 10 Right

Halt Operation

Cycle Operation

Indenter Test

Target Load (N): 0

MRI: 100

Repetitions: 1 Run Test

Constant Depth Test

Depth (um): 0

Velocity: 100

Length: 100 Run Test

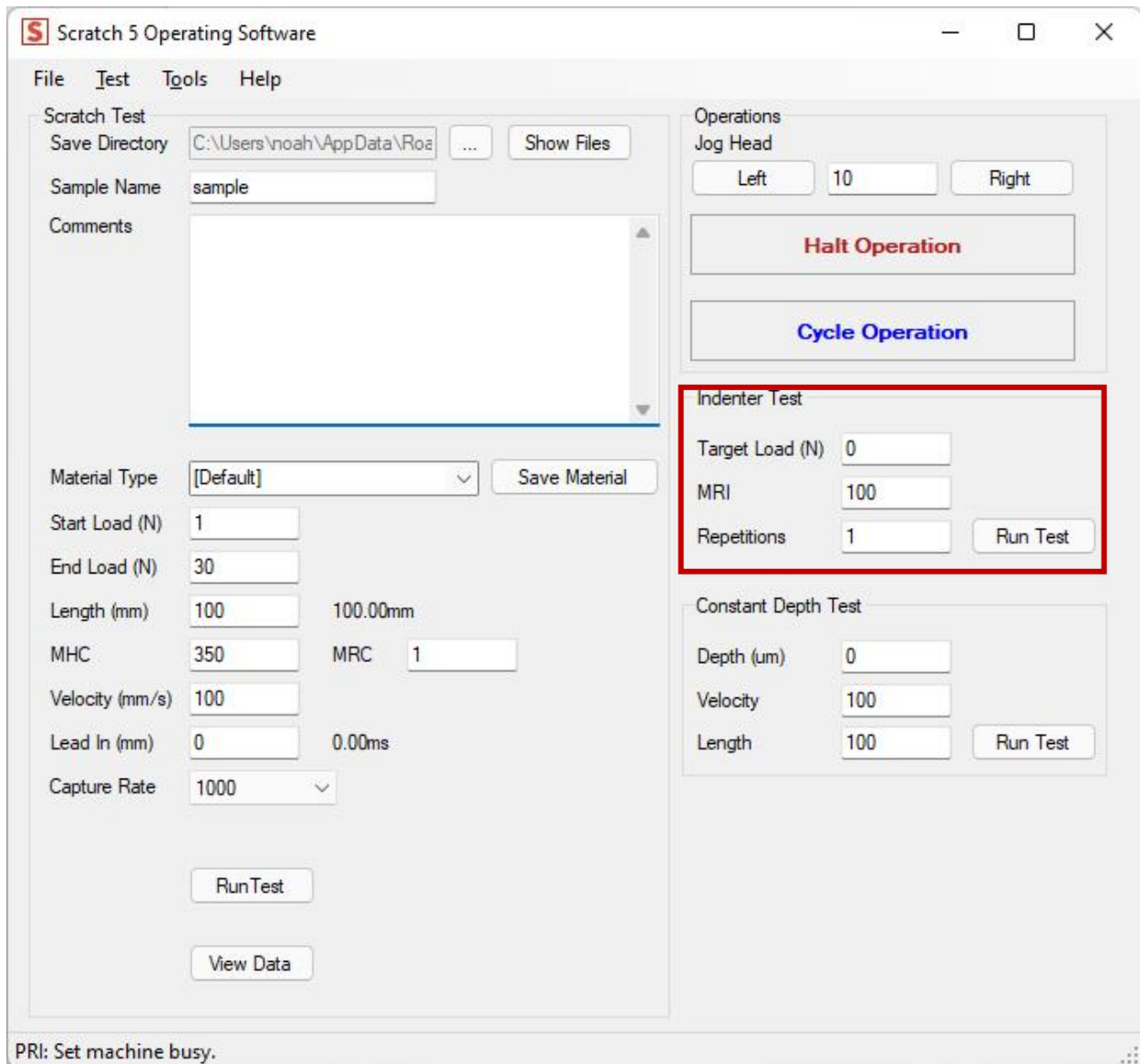
PRI: Set machine busy.

7.14. Indenter Test

The scratch machine can perform repeated indentation tests to a target load. Use the “Indenter Test” box on the right side of the Operating Software.

1. Set the Target Load in newtons
2. Set the MRI (default is 100) - this determines the rate of descent and ascent of the stylus.
3. Set the number of repetitions.

Because the Scratch Machine is load controlled, the descent rate cannot be directly controlled. Instead, it is a function of the load generator assembly and the material itself. This rate is controlled by the MRI value. You will need to inspect the data produced during an indentation to determine if the MRI should be raised or lowered.



Scratch 5 Operating Software

File Test Tools Help

Scratch Test

Save Directory C:\Users\noah\AppData\Roaming ... Show Files

Sample Name sample

Comments

Material Type [Default] Save Material

Start Load (N) 1

End Load (N) 30

Length (mm) 100 100.00mm

MHC 350 MRC 1

Velocity (mm/s) 100

Lead In (mm) 0 0.00ms

Capture Rate 1000

Run Test

View Data

Operations

Jog Head

Left 10 Right

Halt Operation

Cycle Operation

Indenter Test

Target Load (N) 0

MRI 100

Repetitions 1 Run Test

Constant Depth Test

Depth (um) 0

Velocity 100

Length 100 Run Test

PRI: Set machine busy.

This test should be conducted with the stylus in contact with or nearly in contact with the sample surface.

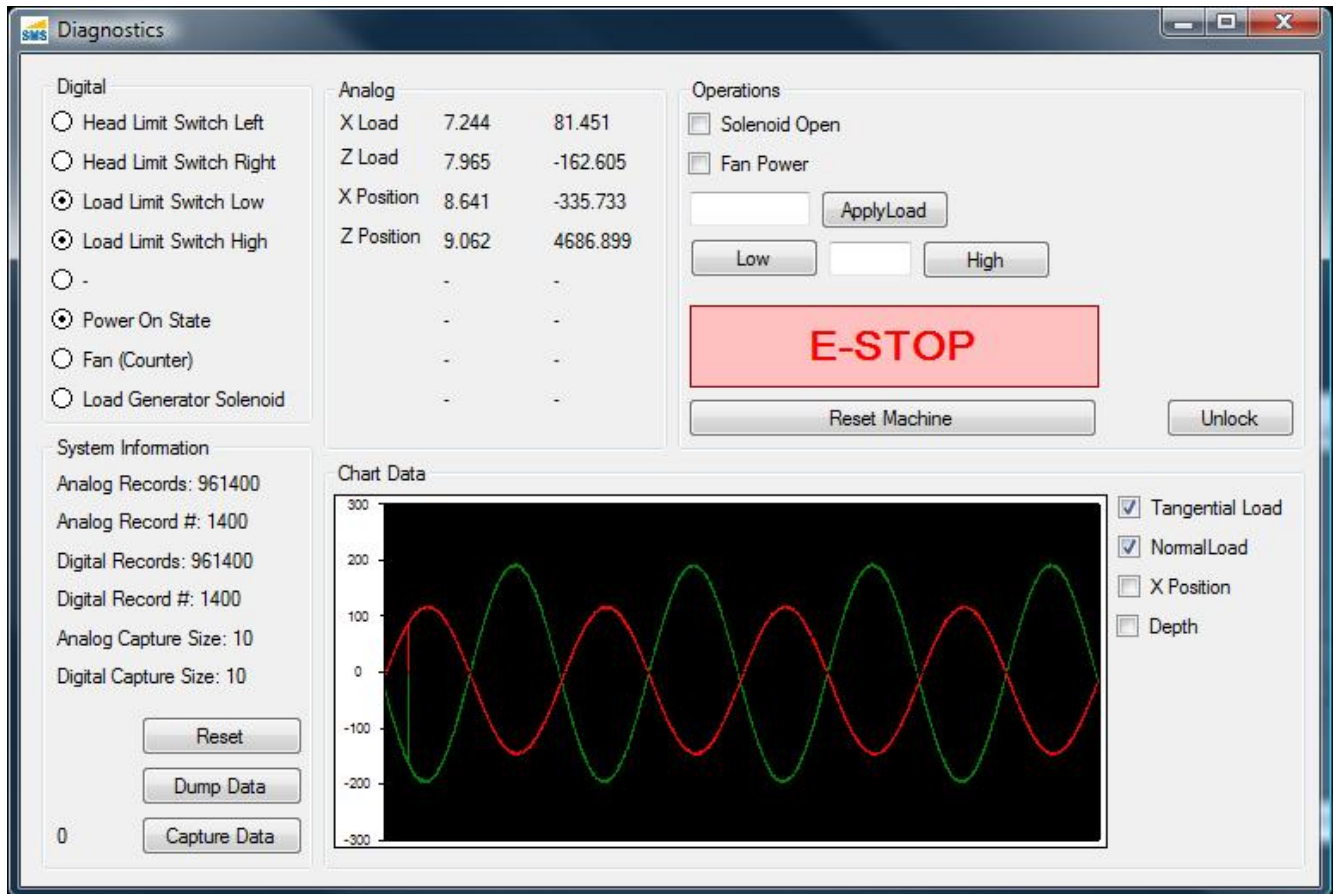
7.15. Constant Depth Test

This test is used to run a scratch test at a constant depth. The scratch machine will lower the indenter until the target depth is reached and then perform the scratch.

7.16. Accessing Diagnostics

To access the diagnostics window, click the “Tools” menu and select “Diagnostics”. The Diagnostics window can be used to acquire real-time information on the status of the Scratch 5 Machine.

NOTE: Parts of the Diagnostic interface allow you to operate the machine without safety checks. Use of the Diagnostics interface may cause permanent damage to the machine, or leave it in an unusable state. Please only use the Diagnostics window as specifically directed in this manual, or as directed by a qualified technician.



7.16.1. Components

Digital

These components relay on-off states of the machine.

- ▶ Head Limit Switch Left – a filled circle indicates that this switch is depressed (normally by the Scratch Head).
- ▶ Head Limit Switch Right – a filled circle indicates that this switch is depressed (normally by the Scratch Head).
- ▶ Load Limit Switch Low – a filled circle indicates that the load generator is in the lowest position.
- ▶ Load Limit Switch High – a filled circle indicates that the load generator is in the highest position.

- ▶ Power On State – indicates that the machine is powered on.
- ▶ Fan – indicates that the machine fan is turned on.
- ▶ Load Generator Solenoid – indicates the status of the Load Generator Solenoid.

Analog

Displays the real-time raw and scaled voltages from the sensors. The column on the left indicates the real-time raw voltage measured. The column on the right indicates the real-time scaled values (using the Calibration Scales for each sensor).

System Information

Indicates some status about the real-time internal system state.

- ▶ Reset – will reset the capture set.
- ▶ Dump Data – will dump the current set of records to disk as indicated by the “Analog Record #” count.
- ▶ Capture Data – will begin to capture data for display in the Scratch Data Viewer. The number to the left indicates the number of records captured. Using this function will overwrite the previous in-memory Scratch data. Do not use this function if you have not saved the last set of Scratch data from a Scratch test.

Operations

This section is used to exercise portions of the Scratch 5 Machine which are not typically available during normal operation. Using these options without the direction of a technician can severely damage the Scratch 5 Machine.

- ▶ Solenoid Open – opens the solenoid valve on the air spring cylinder, immediately releasing pressure.
- ▶ Fan Power – turns the fan on and off.
- ▶ Apply Load – will attempt to apply the target load.
- ▶ Low/High – will move the load generator by load units (approximately 150 in a full cylinder stroke).
- ▶ E-STOP – sets the Emergency Halt State.
- ▶ Reset Machine – sends reboot and reset signals to the Scratch 5 Machine.
- ▶ Unlock – unlocks the interface (even if the Scratch 5 Machine is not available).



Chart Data

This area shows a real-time chart display of the current sensor states. You can choose to view one or more sensors by selecting the check box next to each sensor.

8. Troubleshooting

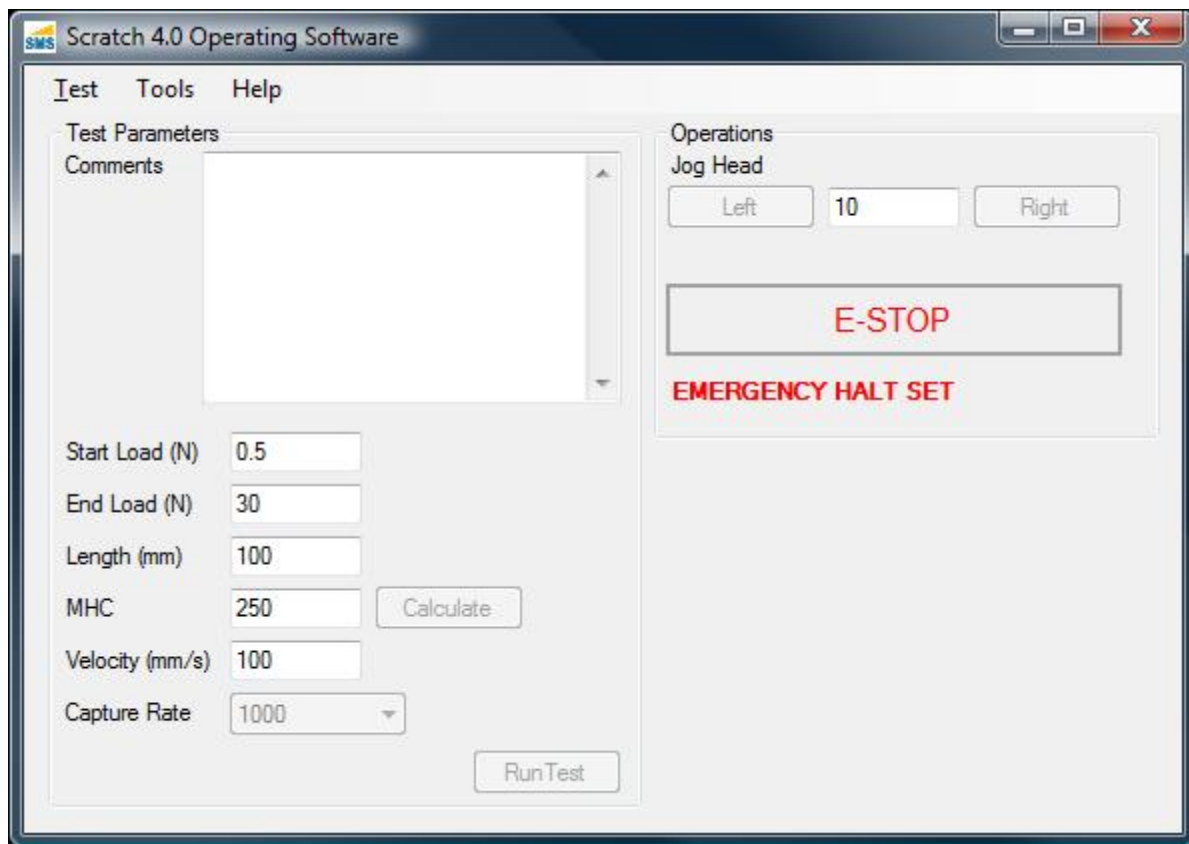
8.1. Operating Software Freezes After Jogging

The jogging operation can occasionally result in the operating software “freezing” with the control buttons grayed out.

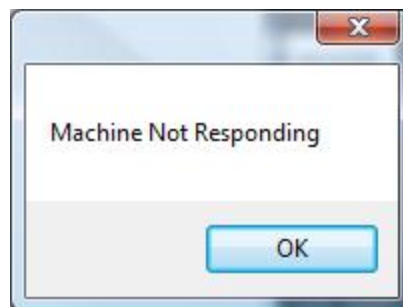
1. Wait for all motion to cease
2. Click “Tools”, “Clear Halt”

8.2. Scratch Machine Not Found at Startup

Your operating computer may have multiple communication ports with which to communicate with the Scratch Machine. These ports are labeled COM Port 1, COM Port 2, etc. By default, the Scratch Operator attempts to find the machine on “COM Port 1”. If this is the wrong port, you will have to use the Find Scratch Machine functionality to find the Scratch 5 Machine. The machine will display a message, and the interface will be partially inaccessible.



If the Scratch Operating software is started prior to turning on the Scratch 5 Machine, you will need to follow these instructions to initialize the software for the machine. If the software displays the following message at startup, then this procedure will need to be followed in order to initialize the software after the machine is powered on.



3. Click “Tools”, “Find Scratch Machine”
4. Follow the steps 7 through 11 in the section “Installing the Scratch Operating Software”.
5. When the Scratch Machine is found, the interface will become accessible as follows.

